

GP Patient Survey 2020 Technical Annex



Contents

1	Introduction	6
1.1	Survey governance	7
2	Questionnaire and material design	9
2.1	Questionnaire development for the 2020 survey	9
2.2	The final questionnaire	9
2.3	Materials development for the 2020 survey	10
3	Sampling	12
3.1	Sample overview	12
3.2	NHS Digital population extraction procedure	12
3.3	Sample size calculation	13
3.4	Patient sample selection	14
4	Communications with patients and practices	17
4.1	Survey website	17
4.2	Support for participants	19
4.3	Information for display in GP practices	21
5	Data collection	23
5.1	Postal survey	23
5.2	Alternative methods of completion	24
6	Data analysis	31
6.1	Questionnaire processing	31
6.2	Inclusions and exclusions	31
6.3	Quality assurance	32
6.4	Editing the data	32
6.5	Weighting strategy	33
6.6	Confidence intervals	35
7	Response rates	39
7.1	Unadjusted response rates (published)	39
7.2	Adjustments to response rate	43
8	Reporting	46
8.1	Presentation of statistics	46
8.2	Impact of COVID-19 on results	48
8.3	Deliverables	51
8.4	The GPPS 'Surveys and Reports' link	54
8.5	The GPPS analysis tool	57
9	Appendix	62
9.1	Questionnaire	62
9.2	Initial letter	70
9.3	Reminder postcard	72

9.4	First reminder letter	73
9.5	Second reminder letter	75
9.6	Piloting a new sample frame	77
9.7	Experiments	77

List of tables

Table 5.1:	Survey mailout dates	24
Table 5.2:	Completes per language and BSL	28
Table 6.1:	Confidence intervals for practices, CCGs and national data	35
Table 6.2:	Power calculations for CCGs and practices	37
Table 7.1:	Surveys sent, returned and response rates	39
Table 7.2:	Response rates by gender	39
Table 7.3:	Response rates by age	39
Table 7.4:	Number and proportion of practices within each response rate band	41
Table 7.5:	Unweighted, weighted and adjusted response rates	44
Table 8.1:	Proportion of responses by time in fieldwork, 2019 and 2020	50
Table 8.2:	Mode of completion by time in fieldwork, 2019 and 2020	51
Table 8.3:	Weighted reports (published via the www.gp-patient.com website)	52
Table 8.4:	Weighted and unweighted datasets provided to NHS England (not published)	53
Table 8.5:	Unweighted reports (published via the website)	53
Table 8.6:	Annual reports (published via the website)	54
Table 9.1:	Details and response rates of the PDS pilot sample and each experimental treatment group	79

List of figures

Figure 4.1:	The www.gp-patient.co.uk homepage	17
Figure 5.1:	Viewing the questionnaire in BSL	25
Figure 5.2:	Login screen for online survey	26
Figure 5.3:	Question from the online survey	27
Figure 7.1:	Number of practices within each response rate band over time	40
Figure 7.2:	National response rates to the survey over time	42
Figure 8.1:	GPPS 2020 fieldwork and COVID-19 timeline	49
Figure 8.2:	Survey and reports link on the GPPS website	55
Figure 8.3:	CCG slide packs page	56
Figure 8.4:	Website analysis tool home page	57
Figure 8.5:	Analysis tool cross-tabulation function	58
Figure 8.6:	Website analysis tool – Trends 2018, 2019 and 2020	59

Introduction

1 Introduction

This technical annex provides details of the 2020 GP Patient Survey (GPPS) conducted by Ipsos MORI. The survey was conducted on behalf of NHS England.

This is the fourteenth year that the GPPS has been conducted in England. Between 2011 and 2016 the survey took place twice a year, having previously been conducted on a quarterly basis (April 2009 - March 2011) and annually (January 2007 - March 2009). Since 2017 the survey has returned to an annual format.

The survey uses a quantitative postal methodology, including an option for online completion. In January 2020, questionnaires were sent to around 2.33 million adult patients followed by a postcard reminder one week after the initial mailing. Two full reminder mailings were then sent to non-responders in February and March. Fieldwork dates are reported in Chapter 5.

The questions included in the survey ask patients about their local GP services (including methods of booking appointments, awareness and use of online services, awareness and satisfaction with opening times and preferred GPs), experience of making an appointment, the quality of care at their last appointment, overall experience of their GP practice, experience when their GP practice is closed and NHS dentistry as well as their current health circumstances. There were no changes to the questionnaire this year, following a full redevelopment process in 2018, to allow for consistency and reporting of trend data. More information on the questionnaire design process is available in Chapter 2.

From 2021 the Personal Demographics Service (PDS) will provide the sample frame for GPPS because the National Health Applications and Infrastructure Service (NHAIS) database is being decommissioned. Ahead of this change, to test for any differences between the two sample sources and achieved survey responses, during 2020 fieldwork a pilot was run on PDS mirroring the main NHAIS approach. In addition, as the PDS provides access to email addresses and mobile numbers for the first time, a set of experiments ran alongside this PDS “control” designed to improve the cost-effectiveness of the survey by increasing the proportion completing online. More details of these experiments can be found in the Appendix. Please also see the Appendix for copies of the questionnaire and materials sent in 2020.

1.1 Survey governance

Since February 2014, the governance of the survey has involved input from a steering group, which meets regularly to provide a forum in which GPPS stakeholders can be kept informed of survey progress. The group provide advice to the research team and debate key issues such as questionnaire content, inclusion of practices, analysis and reporting; review the findings of the survey as they emerge; consider the need for any further research and analysis to be undertaken; and raise any questions about the GPPS project with Ipsos MORI and NHS England.

In addition to NHS England and Ipsos MORI, the group consists of representatives from a range of stakeholders, including the following:

- Academics
- British Medical Association
- Care Quality Commission
- Clinical Commissioning Group (CCG) representatives
- Department of Health and Social Care
- Healthwatch England
- GP membership
- National Association for Patient Participation
- Patient Participation Group (PPG) representative
- Patient representative
- Primary Care Network (PCN) professional representative
- Royal College of General Practitioners

Questionnaire and material design

2 Questionnaire and material design

2.1 Questionnaire development for the 2020 survey

No changes were made to the questionnaire in 2020. In 2018 the questionnaire was fully redeveloped which established a new baseline for measurement of patient experience; extensive work was undertaken to ensure the content was relevant in light of the changes taking place to primary care services under the [General Practice \(GP\) Forward View](#). More details can be found in the [questionnaire redevelopment report](#).

While consistency is important, every year the questionnaire content is reviewed for relevance and to ensure that it accurately reflects patients' experience of access and care, as well as best practice in questionnaire design. This year it was decided that no changes were required, resulting in consistency with previous years.

2.2 The final questionnaire

Below is a list of the topics covered in the 2020 questionnaire. The full questionnaire is available in the appendices.

- Your local GP services
- Making an appointment
- Last general practice appointment
- Overall experience
- Your health
- When your GP practice is closed
- NHS dentistry
- Demographics

2.3 Materials development for the 2020 survey

During 2019 fieldwork Ipsos MORI and NHS England trialled a number of experiments on a sub-sample of GPPS respondents. These experiments tested alternative materials and mailing strategies, designed to safeguard the overall response rate and increase the proportion of online completes. The most consistently successful change was improved 'nudge-to-web-lite' messaging on the mailing letters: updating the wording on taking part to mention the online option, adding a note about taking part online being cheaper for the NHS, and adding the online log-in details to the centre of the letter. As a result of these findings, mailing letters for the fieldwork in 2020 were changed to include this 'nudge-to-web-lite' messaging. The full set of letters used are available in the appendices.

Sampling

3 Sampling

3.1 Sample overview

For GPPS 2020, the sample was designed to ensure that, as far as possible, confidence intervals would be of the same magnitude for each practice for any one question – calculations were based on the assumption that the estimate would be the same across all practices and based on a 50/50 question (a 'worst case' scenario in terms of the magnitude of the confidence interval, for example where 50% of respondents at Q31 answer "good"). This method was used to ensure that confidence intervals were as consistent as possible between practices and that none would have particularly wide intervals, resulting in an issued sample size of around 2.33 million patients who were sent a questionnaire.

Patient information was obtained for each practice using registration records held on the National Health Applications and Infrastructure Service (NHAIS) and the Personal Demographics Service (PDS) databases maintained by NHS Digital. The sampling procedure was split into two distinct stages. Firstly, NHS Digital provided an anonymised list of patients for sample size determination and individual patient selection. The selected anonymous records were returned to NHS Digital, and a second file containing the contact details of the selected patients was provided. The control sample was selected from NHAIS, prior to the pilot and experiment sample being selected from the PDS. More details on the pilot and experiments can be found in the appendix.

3.2 NHS Digital population extraction procedure

As in previous years, NHS Digital provided a file of anonymous patient data for all eligible patients who reside in England or Wales and were registered with a practice in England. The file contained a unique reference number, practice code, patient gender, patient age band, and patient postcode.

A sample of patients was then drawn at practice level, as detailed below.

3.2.1 Patients eligible for the survey

Patients were eligible for inclusion in the survey if they had a valid NHS number, had been registered with a GP practice continuously for at least six months at the point of selection, and were 16 years of age or over. Note that this is the third year that 16-17 year olds have been included; prior to 2018 the survey had only been open to those aged 18 or over.

In previous versions of the survey, a further eligibility criterion was enforced to ensure patients would not receive more than one GPPS questionnaire in any 12-month period. As the 2020 GPPS was an annual survey conducted a full 12 months after sampling for the 2019 survey, this rule was not required.

3.2.2 Practices included in the survey

The list of practices to be included was taken from the NHS Digital system, and comprised all practices that had eligible patients as defined above, where the practice had not opted out of the survey as they felt it was inappropriate to their patient population. The number of practices with eligible patients for the 2020 survey was 6,858, but between sample selection and mail-out, some practices became ineligible for the survey. In total, patients in 6,835 different practices were sent questionnaires, and at least one completed questionnaire was received from patients in 6,821 practices.

3.3 Sample size calculation

The sample size was determined for each practice to deliver a likely confidence interval of ± 9.0 percentage points (two-tailed, at the 95% level) in the majority of practices on a question where it was assumed that 50% of the respondents will respond one way and 50% will respond another. This confidence interval was determined iteratively to ensure a total annual issued sample size of c.2.33 million. While this confidence interval can never be achieved in all practices, every effort was made to ensure that it was achieved in the majority.

The sample design involved a proportionately stratified, unclustered sample, which was drawn for each practice. However, where practice population sizes are relatively small and need to be accounted for through the finite population correction, this does have impact on the sample size needed to deliver set confidence intervals. Therefore, the sample size and confidence intervals, as well as calculations used, must be adjusted accordingly.

The number of patients initially selected for inclusion in the sample for each practice (the 'issued sample') was therefore determined by the following components:

- the number of cases required in order to deliver 95% confidence intervals of ± 9.0 percentage points on a 50/50 question; and
- the proportion of patients included in the issued sample who are predicted to respond to the survey – taking into account the number who are eligible but do not respond.

These components were combined to determine the issued sample size in each practice as follows:

$$\text{Issued sample} = \frac{\text{number required to deliver required confidence interval}}{\text{proportion of issued sample predicted to respond}}$$

Both of the components involved in the above calculation needed to be estimated for each practice. It was assumed that simple random sampling will be applied in each practice. On this basis, an estimate was arrived at for the number of responses required to deliver set confidence intervals, taking into account the proportion predicted to respond to a particular question.

It should be noted that the required issued sample size depended upon:

- the number of eligible patients in the population - practice size counts are used to give an estimate of the practice population;
- the proportion being estimated - assuming a “worst case scenario” of 50% for the proportion to be estimated, that is, 50% of respondents answering a given question “yes”; and
- the magnitude of the required confidence interval – which is known to be ± 9.0 percentage points.

The sample size required to deliver the target confidence interval was estimated using the actual response rate for those practices who took part in the 2019 GPPS, and was set at 30% for practices new to the survey or to whom fewer than 100 surveys were issued in the 2019 GPPS. This is to prevent unrealistically high or low response rates being used for new and very small practices.

3.3.1 Adjustments to response rate estimates

To prevent issuing very large numbers of questionnaires in practices which had very low response rates in 2019, a minimum response rate of 24.1% was assumed. This meant that no practice had more than 493 questionnaires issued. The mean mailout size per practice was 341. In order to ensure that a reasonable number of questionnaires were sent to practices with very high response rates, on the other hand, a maximum assumed response rate of 46.9% was set.

3.4 Patient sample selection

The anonymous patient data sent by NHS Digital was sorted within each practice by gender then age band. The required number of patients per practice was then selected on a ‘1 in n’ basis, and the unique survey reference numbers returned to NHS Digital.

3.4.1 Personal data extractions

On receipt of the selected records, NHS Digital then extracted the contact details for each of the sampled patients. The extracted file contained, for each patient, the unique survey serial number, patient name, practice code, address, month and year of birth, gender, and NHS ID number. Where a selected patient had become ineligible since the provision of the anonymous data, an “exclusion” record was sent instead, containing the unique survey serial number and reason for the exclusion.

3.4.2 Sample cleaning and exclusions

A number of checks were made on the supplied names and addresses to remove inappropriate records. These checks included:

- duplicates between practices (identified by NHS ID number). Where duplicates existed, both were removed as we could not confirm which practice they belong to;
- duplicates within practices; and
- non-address details or other inappropriate information contained in the address. These could include:
 - key safe numbers, telephone numbers and other numerics not related to the address;
 - unexpected words or phrases in the name or address (including “unknown”, “homeless”, “deceased”, “test”, etc.); and
 - incomplete addresses.

All sampled patients from all practices were then randomly sorted before being allocated sequential reference numbers (to ensure there was no link between reference numbers and practices). A “mod-10” check digit was added to the end of the reference numbers to ensure processing integrity during data capture.

For the experiments conducted during 2019 fieldwork, sampled patients were randomly assigned to either the main sample or one of the experiment groups. For more details on this, please see the Appendix.

3.4.3 Final mailed sample after cleaning and exclusions

The final number of patients to whom questionnaires were sent after all sample cleaning had been finished was 2,329,590.

Communications with patients and practices

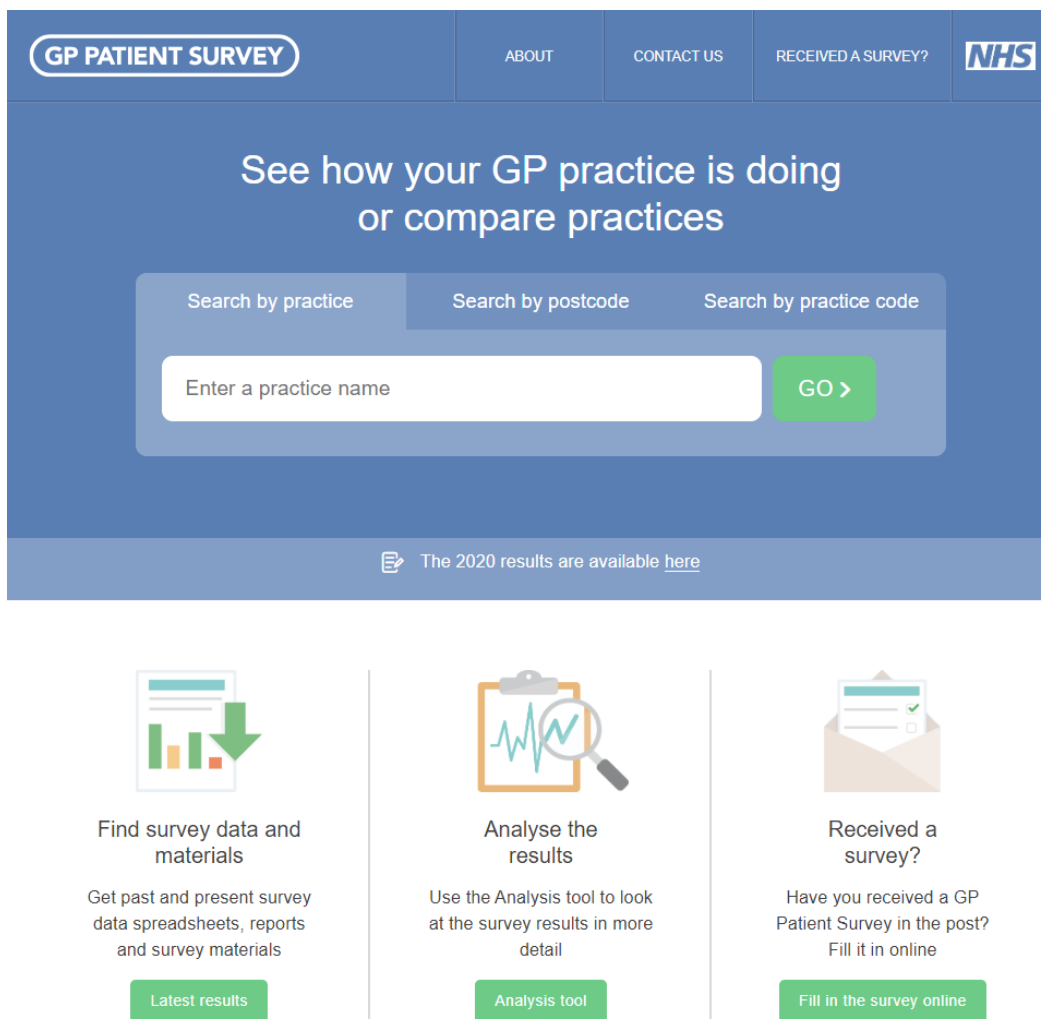
4 Communications with patients and practices

In order to raise the profile of GPPS and provide patients and practices with information about the survey, a series of communication activities are undertaken, such as hosting a survey website, and providing a survey helpline to respond to frequently asked questions. These are described in more detail below.

4.1 Survey website

A dedicated survey website is maintained and hosted by Ipsos MORI. The advertised web address is www.gp-patient.co.uk. The site is designed to reflect the branding of the questionnaire and all other related materials (see Figure 4.1 for website home page).

Figure 4.1: The www.gp-patient.co.uk homepage



The website was updated on the first day of fieldwork, as the first questionnaires are delivered to patients, to indicate that the survey is open. It is arranged around a number of headings, detailed below:

- **'About'** covers the aims of the survey, ways to take part and information about accessibility. Also included within this link are videos that welcome British Sign Language (BSL) users to the website, explain the survey, and provide responses to a selection of FAQs. The page also links to an online BSL version of the questionnaire.
- **'Received a survey?'** provides information about the online version and links to complete it in either English, BSL or another language. Also provided is a link to previous survey results.
- **'Frequently Asked Questions (FAQs)'** includes information about how patients are selected, help with completing the survey, data protection and accessing the results.
- **'Languages'** provides information about GPPS in 14 additional languages, including Arabic, Bengali, Czech, French, Gujarati, Mandarin, Polish, Portuguese, Punjabi, Slovak, Somali, Spanish, Turkish and Urdu. The FAQs, questionnaire, and covering letter are all translated into these languages in order to make the survey as widely accessible as possible.
- **'Past surveys'** allows users to download past and present survey reports and survey materials.
- **'Promote the survey'** provides tips to GP practices for promoting the survey and contains the poster in English and 14 other languages.
- **'What do you think about the website?'** is a link to a form allowing users to rate the site, provide comments and leave contact details.
- **'Search for a practice'** takes users to the practice reporting tool, which allows them to view results for a specific practice.
- **'Compare a practice'** allows users to compare the results of different practices.
- **'Analysis tool'** is a link to the analysis tool which allows users to interrogate the GPPS data further (see section 8.4).
- **'Latest results'** is an archive of all previous datasets, reports, questionnaires and letters.
- **'For GP staff'** contains information for GPs about the benefits of the survey.

- **‘Why use the GP Patient Survey data?’** provides information about the GP Patient Survey, what information can be found in the survey results, and how the website can help the user. It also includes a GP Handbook developed by academic partners giving practices advice on how to use their survey results to improve patient care.
- **‘How do I...?’** provides guidance on how to complete the survey, how to find practice and CCG data, and how to use the website and analysis tool to conduct further analysis on the data.
- **‘Uses of GPPS’** details a number of examples about how GPPS data is used. This includes uses by national organisations and a series of case studies. It was newly developed in 2019 and is continually updated.
- **‘Contact us’** provides a link to telephone and email contact details for the GPPS team at Ipsos MORI.
- **‘Accessibility’** gives information on how the website can be adapted or used by people with different accessibility requirements, such as by changing the text size, background colours, keyboard navigation or using with a screen reader.

4.2 Support for participants

4.2.1 Telephone helplines

Ipsos MORI offer a Freephone helpline for patients who would like more information about the survey, with separate numbers for English and 14 foreign language lines. In total, c.14,625 calls were handled by the helpline team over the course of 2020 fieldwork.

4.2.2 English language telephone helpline

The English language helpline was staffed by a fully trained Ipsos MORI team between 8am and 9pm on weekdays and 10am to 5pm on Saturdays from January to March 2020. A voicemail system is used during quieter periods (see details below). In order for call handlers to answer patients’ queries, they are provided with a manual containing a complete list of over 200 FAQs. These are updated annually to address any new or emerging queries patients may have. Where the call handlers cannot answer a query, the details are passed on to the GPPS research team who will respond directly.

During quieter periods (generally 10 days after each mailing), a voicemail message briefly explains the purpose of the survey and asks the caller to leave a message and telephone number if they wish to be called back. Interviewers then return the calls within two working days, making up to eight attempts to reach the caller.

As well as being a source of information for patients, the helpline also enables sampled patients to complete the survey over the telephone.

In addition, patients can opt out of the survey by providing their reference number or contact details to the helpline.

4.2.3 Foreign language telephone helpline

In order to make the survey as accessible as possible, there are separate helplines for each of the 14 foreign languages that the survey is offered in. Each language has its own Freephone number which is connected to a voicemail message in the corresponding language. As with the English language voicemail, a message briefly explains the purpose of the survey and asks the caller to leave a message and telephone number if they wish to be called back. Interviewers in Ipsos MORI's International CATI Centre then return the calls within two working days. Again, up to eight attempts are made to return the call. As with the English language helpline, patients are able to complete the survey over the phone or opt out of taking part.

4.2.4 Email helpline

As well as using the telephone helpline, patients are also able to email the GPPS team at Ipsos MORI with any queries. In total, approximately 1,591 email queries were received during fieldwork in 2020.

4.2.5 Whitemail

The survey also generates a large volume of whitemail returned to the Freepost address, including letters and notes addressed to the survey team or to NHS England. This is separated from the returned questionnaires and delivered to the helpline team on a weekly basis for review. Where a response is requested or deemed otherwise necessary, the patient will be written to. For 2020 fieldwork, around 1,140 letter responses were sent.

4.2.6 Safeguarding

The majority of calls and other correspondence received about the survey are relatively straightforward, and the helpline team are well briefed and experienced in engaging with respondents ethically and sensitively. However, where a cause for safeguarding concern occurs a formal protocol (agreed with NHS England) outlines the procedures that staff should follow. All potential safeguarding cases are reviewed by the research team, and if necessary, escalated to the Ipsos MORI GPPS Ethics Board; a group with particular experience in safeguarding situations. If advised by the Ethics Board, the circumstances are then shared with NHS England. This process ensures all instances are dealt with as sensitively and quickly as possible. For 2020 fieldwork, the Ethics Board was not required to review any safeguarding queries.

4.3 Information for display in GP practices

As well as these activities, a poster is made available for GP practices to display in their practices in English and 14 other languages. Copies of the posters are available on the GPPS website for download and printing or displaying on electronic notice boards at <https://gp-patient.co.uk/promote>. For 2020 fieldwork, this page was updated to provide additional tips to GP practices for promoting the survey.

Data collection

5 Data collection

The GP Patient Survey is primarily a postal survey. However, patients also have the opportunity to complete the survey online or by telephone and it is also offered in a variety of accessible formats. These options are discussed in greater detail below.

5.1 Postal survey

5.1.1 Processing the sample

The final survey sample is delivered to the printing house via secure file transfer protocol (SFTP), using high level encryption. Upon receipt it is cleaned using the Postcode Address File (PAF), a process which ensures that the questionnaires are sent to the correct postal address and that the mailing is eligible for postage discounts. A downstream access provider is used for processing the mailing packs, with items then handed over to Royal Mail for 'final mile' delivery.

5.1.2 Printing

All questionnaires, letterheads, C5 Business Return envelopes, and C5 outer envelopes are printed in advance of the survey. Once the sample is made available, the questionnaires are then personalised with a unique reference number and online password. The letters are also personalised with name, address, and the same unique reference number and password as appears on the questionnaire.

A single questionnaire, letter, and Business Return envelope are then packed into an outer envelope by machine, and sorted into Walksort batches, ready for collection by the downstream access provider.

5.1.3 Posting the questionnaire

Initial letters and questionnaires were sent to all patients in the final sample on the dates in Table 5.1, followed by a postcard reminder. Two additional full reminder mailings (letters and questionnaires) were then sent to patients for whom no recorded response was received by the printing deadline. Copies of all letters can be found in the Appendix.

Patients who were **not** sent a full reminder included those who met the following criteria at the point of the printing deadline:

- those who returned their questionnaire to Ipsos MORI and it was processed before the printing deadline;
- those who completed the questionnaire online;
- those who completed the survey via the helpline;

- those who telephoned or emailed the helpline and opted out of the survey;
- those who replied via letter indicating they wished to opt out of the survey or returned a blank copy of the questionnaire;
- those who opted out via NHS England;
- those whose questionnaires were returned to sender; and
- those recorded as deceased or no longer eligible on the NHS Digital database.

Table 5.1: Survey mailout dates

	<i>Dates</i>
Initial survey sent	January 2 – 4 2020
Postcard reminder sent	January 9 – 11 2020
Early timings first reminder sent	January 22 2020
First reminder sent	February 3 – 5 2020
Early timings second reminder sent	February 12 2020
Second reminder sent	March 2 – 4 2020

5.2 Alternative methods of completion

Although patients are offered several methods of completion, only one response per patient is included in the final data.

5.2.1 Online completion

Patients are offered the option to complete the survey online via the GPPS website in English, one of the 14 other languages offered, or in British Sign Language (BSL). These different versions of the survey are accessible from specific language pages on the website. The online survey page of the website gives those invited to take part the opportunity to choose the language in which they wish to complete the survey (English, Arabic, Bengali, Czech, French, Gujarati, Chinese, Polish, Portuguese, Punjabi, Slovak, Somali, Spanish, Turkish or Urdu).

Likewise, the option for patients to access the BSL version is via the page dedicated to supporting BSL users. This involves showing video clips of a BSL user signing the instructions, questions, and options available (see Figure 5.1).

Figure 5.1: Viewing the questionnaire in BSL

GP PATIENT SURVEY

0:26

YOUR LOCAL GP SERVICES

Generally, how easy is it to get through to someone at your GP practice on the phone?

Very easy

Fairly easy

Not very easy

Not at all easy

Haven't tried

<< >>

About Ipsos MORI · Privacy Policy · Contact Us · FAQs · Accessibility

Ipsos MORI

Regardless of the language chosen, each patient in the sample is assigned a unique reference number and password (printed on the letter and on the front page of the paper questionnaire) that allows them to access the online survey. In order to complete the survey online, patients are required to enter these details on a first login screen (see Figure 5.2).

Figure 5.2: Login screen for online survey

GP PATIENT SURVEY

Please provide your Survey number and Password to participate in the survey.

Language

Survey number

Password

Your login details can be found on the front page of the questionnaire.
[Click here to see where to find your Survey number and Password](#)

OK

Logging in may take a few moments so please wait.

[About Ipsos MORI](#) [Privacy Policy](#) [Contact Us](#) [Languages](#) [FAQs](#)
[Accessibility](#)

For all versions of the online survey, the questions are identical to those on the paper questionnaire in terms of wording and design.

Figure 5.3: Question from the online survey

The screenshot shows a survey interface with a blue header. On the left, a white rounded rectangle contains the text "GP PATIENT SURVEY". To its right is a progress bar and three "A" icons. Below the header, a grey bar contains the text "YOUR LOCAL GP SERVICES". The main question is "Generally, how easy is it to get through to someone at your GP practice on the phone?". Below the question are five radio button options: "Very easy", "Fairly easy", "Not very easy", "Not at all easy", and "Haven't tried". At the bottom of the question area are two buttons: a white one with "<<" and a green one with ">>". The footer contains links for "About Ipsos MORI", "Privacy Policy", "Contact Us", "FAQs", and "Accessibility", along with the "Ipsos MORI" logo.

GP PATIENT SURVEY

YOUR LOCAL GP SERVICES

Generally, how easy is it to get through to someone at your GP practice on the phone?

Very easy

Fairly easy

Not very easy

Not at all easy

Haven't tried

<< >>

[About Ipsos MORI](#) · [Privacy Policy](#) · [Contact Us](#) · [FAQs](#) · [Accessibility](#)

Ipsos MORI

Only one online response per patient is accepted. If patients try to complete the survey more than once online, a message appears letting them know they have already completed it. If they fail to complete the survey in one sitting, their reference number and password will return them to where they had left off.

5.2.2 Total number of online returns

150,274 patients completed the survey online during fieldwork in 2020. The number of patients completing the survey online has increased over time (c.50,000 in 2017, c.70,000 in 2018 and c.78,000 in 2019). The larger increase between 2019 and 2020 is due to the impact of implementing the 'nudge-to-web-lite' mailing letters tested in 2019 (see Chapter 2.3).

Table 5.2 details how many patients completed the survey in each available foreign language and BSL. There were also increases in the number completing in another language (2,486 in 2020 compared with 1,835 in 2019) and using BSL (72 compared with 53 in 2019).

Table 5.2: Completes per language and BSL

	<i>Completes</i>
Arabic	147
Bengali	42
Czech	46
French	45
Gujarati	32
Chinese	247
Polish	1,267
Portuguese	203
Punjabi	51
Slovak	50
Somali	9
Spanish	199
Turkish	102
Urdu	46
Total	2,486
BSL	72

5.2.3 Telephone completion

Patients are also able to complete the GPPS questionnaire on the telephone (including in the 14 foreign languages) by calling the Freephone helplines. Patients are asked for their reference number before they can complete the survey and there is an automatic check on the reference number to ensure that it is valid for the live survey. Helpline staff enter callers' answers directly into the online version of the survey. In total, the helpline team assisted 233 patients in completing the survey, mostly because they had a visual impairment or physical disability, but some also needed help because of language or literacy issues.

5.2.4 Braille and large print versions

Braille users are offered the opportunity to receive the questionnaire and letter in Braille, and large print is made available for those who request a copy of the letter and questionnaire in this format. Braille users must complete the online survey. Returned large print questionnaires are entered manually into the online survey by the helpline team, using the patient's unique login details. This year there were 51 requests for a large print survey, of which 24 were returned, and no requests for a Braille version.

5.2.5 Respondent burden

Respondent burden provides information on the burden of those taking part in the survey. It is calculated using the Compliance Cost Model¹ formula shown below:

$$\text{burden} = n_{\text{resp,main_surv}} \times \text{med}(t_{\text{main_surv}})$$

Where:

$n_{\text{resp,main_surv}}$ is the number of responses to the survey, including full and partial responses.

$\text{med}(t_{\text{main_surv}})$ is the median time taken to complete the survey.

For the GPPS 2020 the total compliance cost is 7,620,838 minutes. This is based on 739,637 full completes and 7,504 partial completes to the survey, with a median online completion time of 10.2 minutes.

¹ <https://gss.civilservice.gov.uk/wp-content/uploads/2015/12/Guidance-on-Calculating-Compliance-Costs.pdf>

Data analysis

6 Data analysis

6.1 Questionnaire processing

As in previous years, questionnaires are returned in supplied freepost Business Reply Envelopes (2nd class) to the scanning house.

Envelopes are guillotined and questionnaires collated and prepared for scanning. Any other items of correspondence are set aside for review and response by Ipsos MORI or NHS England, as appropriate.

Questionnaires are scanned and processed using barcode recognition and Optical Mark Recognition technology, with operator verification of uncertain entries. All marks on the forms are recognised at this stage, regardless of whether they are in accordance with the questionnaire instructions.

Questionnaire data collected online is logically prevented from containing data contrary to the questionnaire instructions (such as multiple responses to a question requiring a single answer).

Questionnaires were accepted and included if they were received by 3 April 2020.

6.2 Inclusions and exclusions

The rules and protocols used for delivering the data for the 2020 reports are as follows:

- All questionnaires received with identifiable reference numbers allowing linkage to a GP practice, along with all completed online responses, are eligible for inclusion.
- Returned questionnaire figures are based only on those qualifying for inclusion in the dataset as described in this document.
- The published response rates are based on all completed, valid questionnaires returned and all questionnaires sent. They have not been adjusted to exclude questionnaires which did not reach the patient, e.g. where envelopes have been returned undelivered etc. However, weighted and adjusted response rates have also been included in Chapter 7, which takes into account the selection likelihood and undelivered questionnaires. The following are excluded from the reports:
 - All questionnaires marked as completed by under-16s;
 - All questionnaires where there is only data for a limited number of questions (e.g. only the first page was completed).

- All questionnaires where the barcode number was not in the valid range for the live wave of the survey.
- All questionnaires without a valid practice code.
- All blank questionnaires.

Questionnaire data are combined from scanned and online data sources. Where duplicates between mode of completion exist, the data used are selected according to the case that is the most complete (i.e. with the fewest unanswered questions). If there is no difference in completeness, the data used are then selected according to a priority order with online data having precedence. Where duplicates exist within a completion mode, the earliest return is included.

6.3 Quality assurance

A number of checks were undertaken at key stages of the survey, including during the sample preparation and data cleaning stages. These help to identify obvious errors in the sample and response data, such as the inclusion of ineligible patients or incorrect coding. During reporting it was noted that there was a higher proportion of people who had not answered a selection of questions, including the questions on sex and age when compared with the average for the previous two years. This was investigated further and it was concluded that it was an issue with scanning sensitivity in relation to these questions. The missing values were randomly spread throughout the data set, the scale of the missing values represented a small proportion of overall responses and were shown not to have impacted trends. For these reasons it was concluded that this had not significantly impacted on the survey results.

6.4 Editing the data

As the majority of the completed questionnaires are on paper, there is a degree of completion error that occurs (e.g. ticking more than one box when only one response is required, answering a question that is not relevant, or missing questions out altogether). Therefore, it is necessary to undertake a certain amount of editing to ensure the data is logical. For example:

- If a patient ticks more than one box where only one answer is required, then their reply for that question is excluded.
- Where patients are allowed to select more than one box for a particular question, the reply for that question is excluded if they select two conflicting answers – for example, at Q3 ('In the past 12 months, have you booked general practice appointments in any of the following ways?'), if a patient ticks any of the first five options as well as 'Doesn't apply', then their response for that question is excluded. The following list shows the questions this applies to, as well as the response options that are treated as single code only:
 - Q4 – 'None of these' and 'Don't know'

- Q5 – ‘None of these’
 - Q7 – ‘Don’t know’
 - Q14 – ‘I did not try to get information or advice’
 - Q16 – ‘No, I was not offered a choice of appointment’, ‘Can’t remember’ and ‘Doesn’t apply’
 - Q32 – ‘None of these’
 - Q35 – ‘I do not have any long-term conditions’
 - Q45 – ‘Can’t remember’
- If all boxes are left blank the reply for that question is excluded.
 - If a patient fails to tick the relevant answer for a filter question then any responses are excluded from the subsequent questions relating to the filter question. For example, if a patient responds to Q10 without having first responded ‘Yes, for all appointments’ or ‘Yes, for some appointments and not others’ at Q9, their response to Q10 is removed.
 - For the question on whether they have a long-standing health condition (Q34), patients who initially answer other than ‘Yes’ have their answer recoded to ‘Yes’ if they went on to select any long-term conditions, disabilities or illness at Q35.
 - Where the ethnicity question (Q56) is multi-coded, patients are included in the ‘White English / Welsh / Scottish / Northern Irish / British’ group if this was selected alongside any other response. If someone selects more than one response under any of the ethnic groups (‘Mixed / multiple ethnic groups’, ‘Asian / Asian British’, ‘Black / African / Caribbean / Black British’, and ‘Other ethnic group’) then they are recoded into the ‘other’ response within that grouping; for example, a patient selecting Indian and Pakistani is coded into ‘Any other Asian background’. The same rule applies to multiple responses in the ‘White’ section in cases where ‘White English / Welsh / Scottish / Northern Irish / British’ is not selected. If someone selected two or more responses which are not in the same section, they would be coded into the ‘Any other ethnic group’ category (again, with the exception of cases where ‘White English / Welsh / Scottish / Northern Irish / British’ was selected).

6.5 Weighting strategy

The GPPS 2020 weighting scheme followed the same strategy as in 2019. Weights were generated to correct for the sampling design and to reduce the impact of non-response bias. The weight was calculated using the following three stages:

- Step 1: creation of design weights to account for the unequal probability of selection;

- Step 2: generation of non-response weights to account for differences in the characteristics of responders and non-responders;
- Step 3: generation of calibration weights to ensure that the distribution of the weighted responding sample across practices resembles that of the population of eligible patients, and that the age and gender distribution within each Clinical Commissioning Group (CCG) matches the population of eligible patients within the CCG.

Design weights were computed to correct for the disproportionate sampling of patients by GP practice, as the inverse of the probability of selection, i.e. by dividing the total number of eligible patients in the practice at the time of sampling by the number sampled.

Non-response weights were constructed using a model-based approach to estimate the probability of taking part in the survey. This model estimated the probability of responding based on the age and gender of the patient and the socio-economic characteristics of the neighbourhood in which the patient lived. These weights aim to reduce the demographic and socio-economic differences between respondents and non-respondents.

Data from the GPPS sampling frame (patient's age, gender and region) was linked to external data using the home postcode of the patient. This consisted of measures from the 2011 Census: output area aggregated measures of ethnicity, marital status, overcrowding, household tenure and employment status, as well as the indicator of multiple deprivation score (IMD) and ACORN group. For a small number of patients (617) the IMD score was missing – for these patients the missing IMD scores were imputed using the mean for the practice that they were registered with.

The probability of response was estimated using a logistic regression model with response (or not) as the outcome measure and the measures described above included as covariates. Standardised design weights were applied when running the model to obtain unbiased estimates for the coefficients.

The model allows us to identify patterns in non-response behaviour: female patients were more likely to respond than male patients, younger patients were less likely to respond than older patients. There were also some differences by region, with response lowest in the North West and highest in the South West. Response was also lower in ACORN groups K ('Student Life'), P ('Struggling Estates') and Q ('Difficult Circumstances').

Response also decreased for patients living in Census Output Areas (OAs) with the following characteristics:

- higher levels of deprivation based on IMD scores;
- a higher proportion of people from ethnic minority backgrounds;

- a higher proportion of single, separated or divorced people;
- a higher proportion of households with three or more people;
- a higher proportion of privately rented households; and/or
- a lower proportion of employees.

The non-response weights were calculated as the reciprocal of the predicted probability of response estimated from the model. To avoid very large weights, the non-response weights were capped for the 0.3% largest values. The non-response weights were multiplied by the design weight to obtain the starting weights for the calibration.

The starting weights were then calibrated to practice population counts, and to population counts by age/gender within each CCG. The population totals used for the calibration were estimated from the sampling frame.

To avoid very large weights, the ratio of the calibration weights to their starting weights was trimmed at a value of 2.5. Finally, the weights were standardised to sum to the sample size.

6.6 Confidence intervals

Because estimates from the GPPS are based on a sample of the population, they are measures with some uncertainty. This uncertainty is represented by applying confidence intervals, which are ranges within which we are fairly confident (95%) that the true population value lies.

The table below gives examples of what the confidence intervals look like for an 'average' practice and CCG, as well as the confidence intervals at the national level, based on weighted data.

Table 6.1: Confidence intervals for practices, CCGs and national data

	Average sample size on which results are based	Approximate confidence intervals for percentages at or near these levels		
		Level 1: 10% or 90%	Level 2: 30% or 70%	Level 3: 50%
		+/- (percentage points)	+/- (percentage points)	+/- (percentage points)
National	739,637	0.10	0.15	0.16
CCG	5,479	1.11	1.69	1.84
Practice	108	6.63	10.13	11.06

For example, in a CCG where 5,479 people responded (the average size for a CCG) and where 30% give a particular answer, the confidence interval is +/-1.69 percentage points from that survey estimate (i.e. between 28.31% and 31.69%).

In instances where the base size is small (e.g. practices where 100 patients or fewer responded to a question) confidence intervals will be wider. Findings for these questions should be regarded as indicative rather than robust.

Lower and upper limits for confidence intervals for a selection of questions are presented in the practice and CCG Excel reports (<https://gp-patient.co.uk/surveys-and-reports>).

Often statistical summary measures and tests are based on simplified assumptions about how the underlying population is distributed. These assumptions hold for many real-life situations but can fail for extreme situations; such is the case with confidence intervals. Within the context of GPPS, where some satisfaction scores are around 99%, there is more scope for a survey estimate to fall below 99% than above, purely because there are far more possible lower scores (this makes sense intuitively as well as probabilistically). The confidence interval has to take this limit into account, and, in such circumstances, the lower limit is expected to be larger than the upper limit. As a result, Wilson's method is used to calculate confidence intervals, which accounts for this, and permits intervals to be asymmetric – the lower and upper limits can be unequal in size (unlike other confidence interval tests)².

Power calculations are carried out to estimate the size of a real effect that would be required in order to be likely to find a statistical difference in the statistical test performed. This level of likelihood is called “power” and the acceptable level is usually set at 80%, i.e. the difference would be significant for 80% of the tests on average if the survey was repeated. The following table shows the size of the real percentage point (pp) difference in the population between a pair of average sized CCGs, and also for a pair of average sized practices, that would be detected with 80% power in the survey data³.

² Standard confidence interval testing uses the Wald method.

³ Power calculations apply a statistical test to protect against the risk of false negatives. False negatives occur when a difference that does exist is declared as not existing.

Table 6.2: Power calculations for CCGs and practices

	Average sample size on which results are based	Difference between the two estimates		
		Level 1: Lower estimate = 10%	Level 2: Lower estimate = 30%	Level 3: Lower estimate = 50%
		+/- (percentage points)	+/- (percentage points)	+/- (percentage points)
CCG	5,479	2.3	3.5	3.7
Practice	108	17.4	22.0	21.8

Using an example, comparing two practices with the same number of responses (108), if the result for the first practice said that 10% of patients had booked an appointment online, then the percentage in the second practice would need to be at least 27.4% for a statistical difference to be identified with an acceptable level of statistical power (80%) i.e. 17.4 percentage points higher, as outlined in the table above.

Response rates

7 Response rates

7.1 Unadjusted response rates (published)

The overall response rate for England was 31.7%, based on 2,329,590 questionnaires sent out and 739,637 returned.

Table 7.1: Surveys sent, returned and response rates

	Number sent	Number returned	Response rate
Total	2,329,590	739,637	31.7%

Table 7.2: Response rates by gender

	2020
Women	35.8%
Men	27.8%

Table 7.3: Response rates by age

	2020
16-17	19.1%
18-24	13.1%
25-34	15.0%
35-44	20.9%
45-54	29.7%
55-64	45.1%
65-74	62.7%
75-84	62.7%
85+	49.1%

Figure 7.1: Number of practices within each response rate band over time

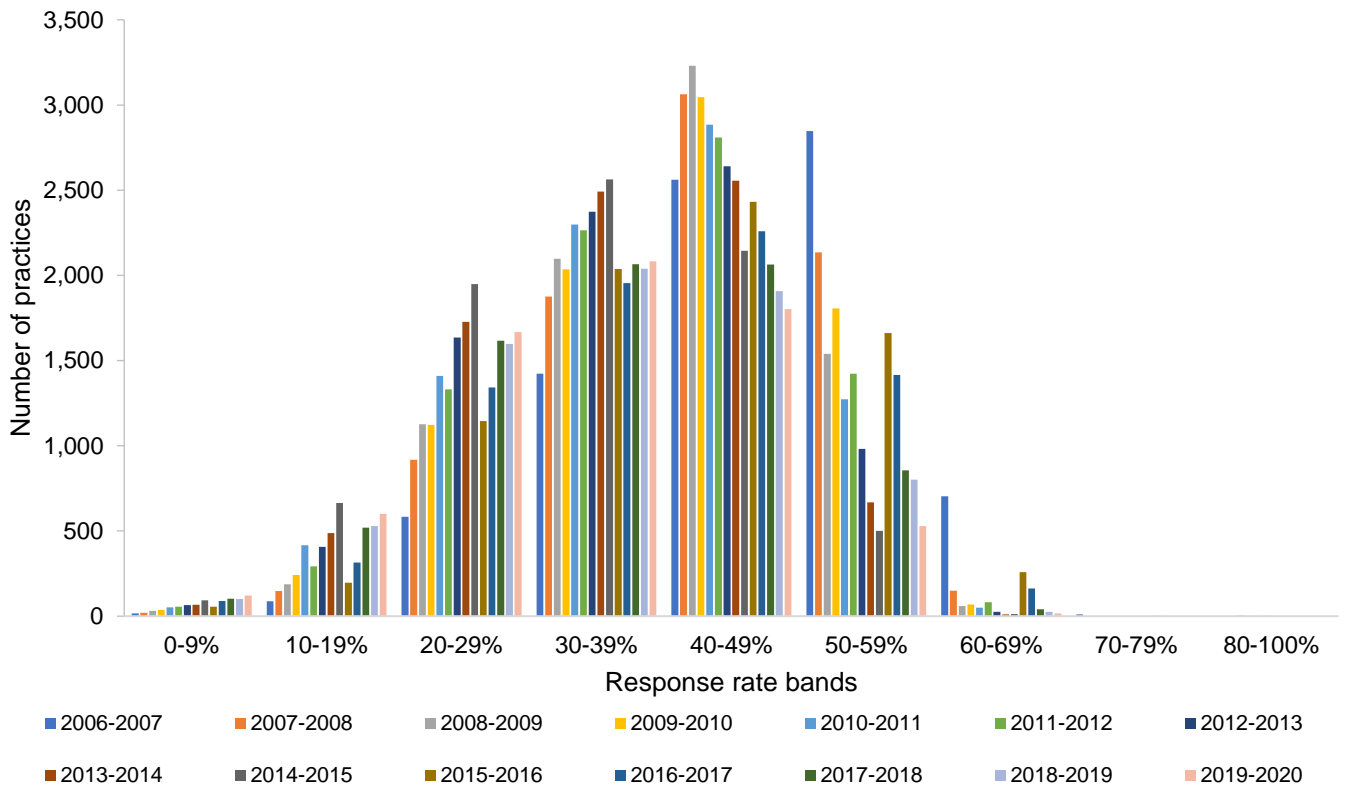
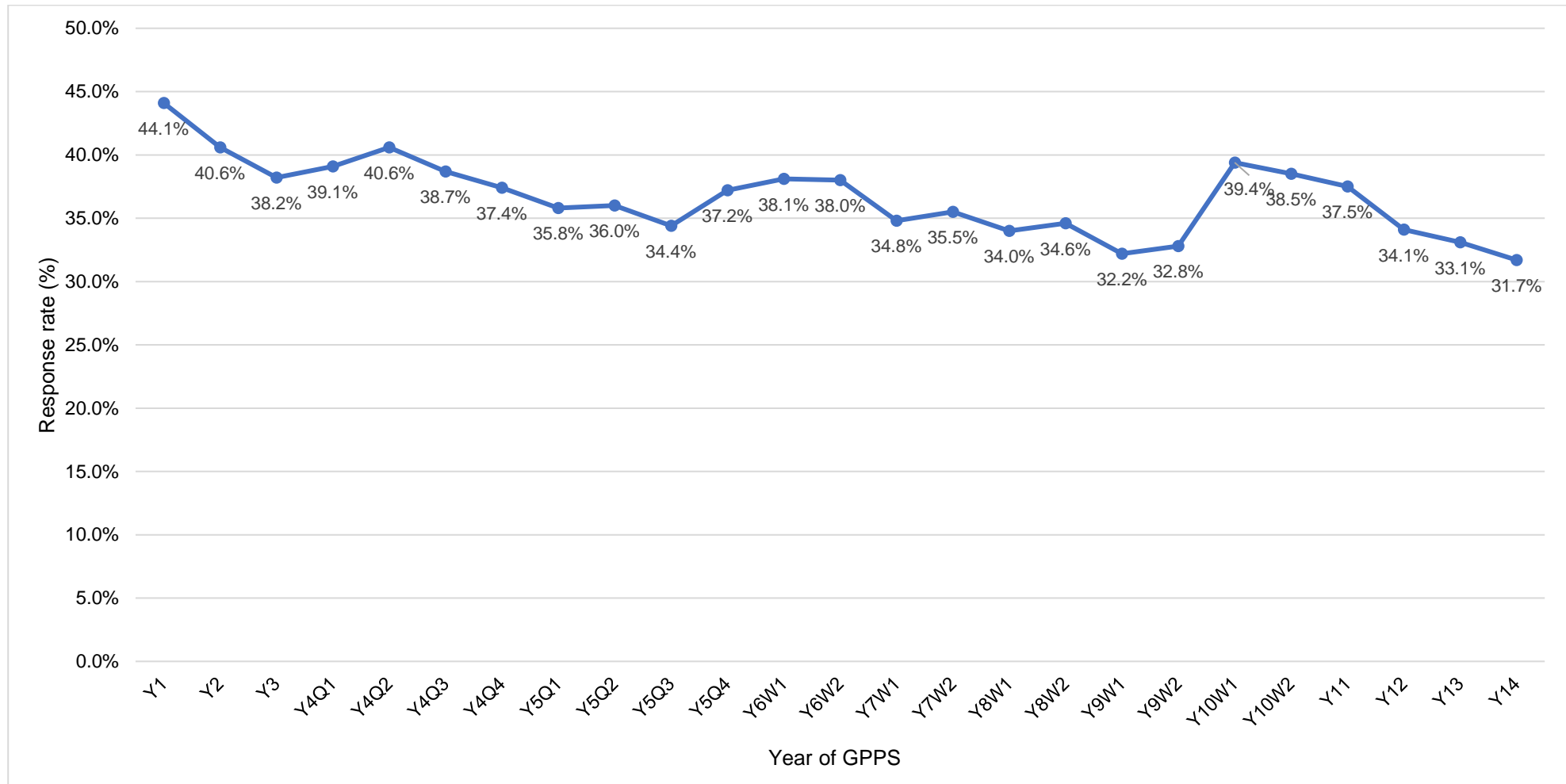


Table 7.4: Number and proportion of practices within each response rate band

For response rates prior to 2011, please see the [2017 technical annex](#).

	Practices in 19/20		Practices in 18/19		Practices in 17/18		Practices in 16/17		Practices in 15/16		Practices in 14/15		Practices in 13/14		Practices in 12/13		Practices in 11/12	
	No.	%	No.	%	No.	%	No.	%	No.	%	No.	%	No.	%	No.	%	No.	%
0-9%	122	2%	101	1%	103	1%	89	1%	56	1%	94	1%	66	1%	64	1%	56	1%
10-19%	601	9%	529	8%	519	7%	314	4%	196	3%	665	8%	487	6%	406	5%	292	4%
20-29%	1,668	24%	1,597	23%	1,617	22%	1,343	18%	1,146	15%	1,949	25%	1,727	22%	1,636	20%	1,331	16%
30-39%	2,083	31%	2,039	29%	2,065	28%	1,954	26%	2,037	26%	2,563	32%	2,492	31%	2,374	29%	2,265	27%
40-49%	1,802	26%	1,907	27%	2,064	28%	2,259	30%	2,431	31%	2,144	27%	2,556	32%	2,641	32%	2,809	34%
50-59%	528	8%	801	11%	856	12%	1,416	19%	1,662	21%	501	6%	667	8%	982	12%	1,424	17%
60-69%	17	*	25	*	41	1%	162	2%	258	3%	12	*	10	*	25	*	81	1%
70-79%	0	0%	0	0%	0	0%	0	0%	1	*	0	0%	0	0%	0	0%	0	0%
80-100%	0	0%	0	0%	0	0%	0	0%	0	0%	0	0%	0	0%	1	*	0	0%
Total	6,821	100%	6,999	100%	7,265	100%	7,537	100%	7,787	100%	7,928	100%	8,005	100%	8,129	100%	8,258	100%

Figure 7.2: National response rates to the survey over time



7.2 Adjustments to response rate

Alternative presentations of response rates can aid by mitigating the effects that some elements of a survey's methodology might have on the response rate calculation. Two such presentations are discussed below.

7.2.1 Weighted response rate

As described in Chapter 3, the issued samples in GP practices with lower response rates are boosted in order to achieve a minimum sample size. One implication of this is that the issued sample is skewed towards GP practices where participation is likely to be lower. In other words, a patient registered at a practice with a low response rate has a higher chance of being selected for the GPPS than one at a same-sized practice with a high response rate. As a result, one would expect to observe a lower response rate overall compared with a design in which the sample was allocated to GP practices in proportion. Further, it means that comparisons of response rates between waves and with other surveys could be misleading as, by design, the GPPS over-samples patients who are less likely to participate, to ensure sufficient results are achieved from as many practices as possible.

To demonstrate the impact of this, it is recommended that both unweighted and weighted estimates of response rates are presented for samples with unequal selection weights. For example, Lynn et al. write that, '*The importance of weighted outcome rates stems from the possibility that response rates could differ across strata or other intermediate sampling units which have different inclusion probabilities*⁴.'

For the GPPS sample, we know by design that the GP practices (the strata) in which patients have a higher inclusion probability are those with a lower response rate. A **weighted response rate** can therefore be calculated with the issued sample weighted by the original selection weight.

7.2.2 Adjusted response rate

It is also standard practice on many surveys to adjust the response rate to take into account ineligible sample, i.e. participants who could never have been contacted or received a survey during the fieldwork period. For a postal survey this is difficult to calculate, but taking a conservative approach, it is possible to exclude undeliverable post, those who did not receive a questionnaire pack. This is referred to as an **adjusted response rate**.

⁴ Peter Lynn, Roeland Beerten, Johanna Laiho and Jean Martin (2001) Recommended Standard Final Outcome Categories and Standard Definitions of Response Rate for Social Surveys. ISER Working Papers Number 2001-23.

Table 7.5 presents both the weighted and adjusted response rates alongside the published (unweighted and unadjusted) response rate.

Table 7.5: Unweighted, weighted and adjusted response rates

	Unweighted/unadjusted response rate (published)	Weighted response rate (unadjusted)	Adjusted response rate (unweighted)*
2020	31.7%	35.4%	33.2%

* The adjusted response rate (unweighted) calculation for 2020 excludes undeliverable post from the 2020 survey only. This provides a more accurate adjustment than the previous calculation which excluded all undeliverable post received in 2019 regardless of survey year.

Reporting

8 Reporting

8.1 Presentation of statistics

Many of the GP Patient Survey outputs lead with a summary result; a single statistic that provides a quick way of viewing the result for a question. This is usually an aggregation of two individual responses (e.g. '% Easy' is a combination of '% Very easy and '% Fairly easy') or a single response option (e.g. '% Yes').

For some questions it is not appropriate to present a summary result; for instance, where the respondent is allowed to select multiple responses for one question. An example of this is Question 3: 'In the past 12 months, have you booked general practice appointments in any of the following ways?'

8.1.1 Calculation of results / percentages

The GP Patient Survey results are calculated consistently across the various outputs. For some questions the non-specific response options are excluded where appropriate (e.g. haven't tried, can't remember, don't know), to provide a more accurate reflection of how those using a service evaluate it. Non-specific responses in general do not provide information about a patient's experience of GP services.

Using Question 1 as an example below*, removing those who 'haven't tried' to get through to their GP practice on the phone from the calculation provides a better reflection of the views of patients who had tried. Numbers and percentages are presented for the four response options 'Very easy', 'Fairly easy', 'Not very easy', and 'Not at all easy'.

Q1 Generally, how easy is it to get through to someone at your GP practice on the phone?					
Results			Summary results		
	n	%		n	%
Very easy	15	18%	Easy	45	53%
Fairly easy	30	35%			
Not very easy	20	24%	Not easy	40	47%
Not at all easy	20	24%			
Haven't tried	/	/	/	/	/
<i>Base</i>	85	100%		85	100%

* *Dummy data*

There are two exceptions where the non-specific response option percentages are presented separately as these are likely to be of particular interest;

- Q6: 'Haven't tried' – How easy do you find your GP practice's website to use?
- Q8: 'Don't know' – How satisfied are you with the appointment times available to you?

If you have any questions about the presentation of the results, please [email the research team](#).

8.1.2 Changes to note

There were no changes to the questionnaire in 2020. In 2019, for Q35, there was a change to the response code, from 'A developmental condition such as autism or ADHD' to 'Autism or autism spectrum condition'. As a result, this response option is not comparable with data prior to 2019.

If manually comparing 2020 or 2019 with 2018 using the Excel/csv reports, the percentages for some questions are calculated differently (as outlined in the 'Calculation of results / percentage' section above), and care should be taken to ensure that any results are compared on the same basis. Please see the 'Presentation of Statistics' document for further information (available [here](#)).

8.1.3 Trend data for 2018, 2019 and 2020

Due to significant changes in the questionnaire and the inclusion of 16-17 year olds in 2018, there was a break in trends for almost all questions for the 2018 publication. Trends for 2018 - 2020 are displayed in the following outputs:

- National summary report
- National results and trends
- Analysis tool
- CCG slide packs

8.1.4 Previous trend data

In most outputs, trends from previous publications are not presented alongside this data as a result of the significant changes to the survey in 2018. Analysis showed that, in most cases, context effects impacted the survey estimates, even where question wording remained similar. It also found that including 16-17 year olds had an impact on results for the youngest age group overall (16-24 year olds). See the [2018 Technical Annex](#) for more information.

For a small number of questions, trend data may be presented going back to 2012 (depending on when the question was introduced). These questions were not impacted by the changes made to the content of the questionnaire for the 2018 survey, or the extension of the sample to include 16-17 year olds in 2018. Trends for these questions are available in the National results and trends document. This includes the following questions:

- **Your local GP services:** Q1 (ease of getting through to practice on the phone), Q2 (helpfulness of receptionists)
- **When your GP practice is closed:** Q45 (what happened when contacted service when GP practice is closed), Q46 (speed of care and advice received), Q47 (confidence and trust), Q48 (overall experience)
- **NHS dentistry:** Q51 (success in getting an NHS dental appointment), Q52 (overall experience of NHS dentistry), Q53 (why not tried to get NHS dental appointment in last two years)
- **Some questions about you:** Q54 (sex), Q56 (ethnicity), Q58 (parent or guardian), Q59 (caring responsibilities), Q60 (deaf/sign language), Q62 (sexuality), Q63 (religion)

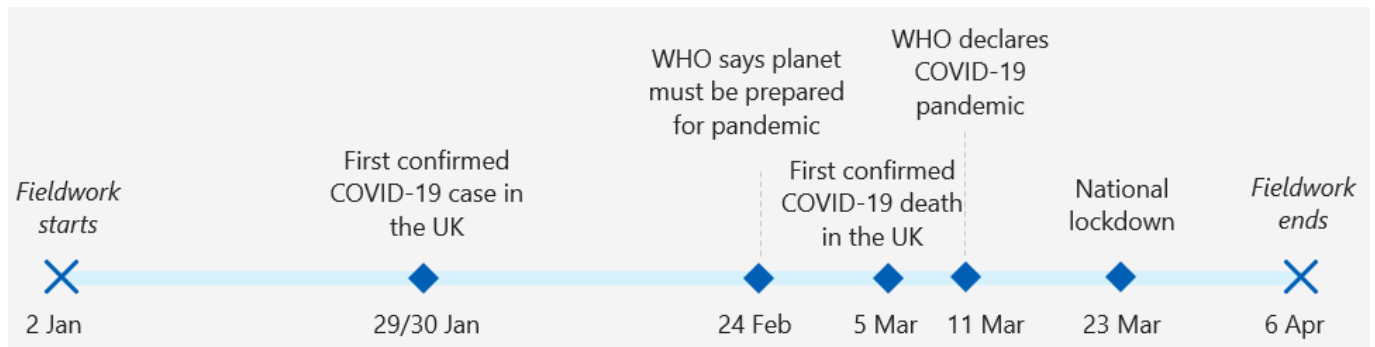
Trends are also reported from 2012 onwards in the National results and trends document for Q55 (Age). This question was impacted by the inclusion of 16 to 17 year olds for the first time in the 2018 survey. Where trends are shown for Q55, this is clearly signposted.

The full data is available for all survey years on the [GP Patient Survey website](#).

As a further reminder, when looking at trend data, it is important to note that analysis in Year 11 identified a fieldwork timing effect, the impact of the survey moving from a bi-annual format (between 2011 and 2016) to annual in 2017. This found evidence of systematic differences in the data collected between the Wave 1 (July-September) and Wave 2 (January-March) fieldwork periods. As a result, where looking at national level trends, comparisons between data after 2017 and data from between 2016 and 2011 should use Wave 2 data only. For full details of this analysis please see the note 'Assessing the impact of change to an annual GP Patient Survey' which can be [accessed here](#).

8.2 Impact of COVID-19 on results

Fieldwork for the 2020 GPPS took place between the 2 January and 6 April. This means that some survey responses were collected after key COVID-19 milestones such as the first confirmed death and national lockdown.

Figure 8.1: GPPS 2020 fieldwork and COVID-19 timeline

Analysis was conducted in order to understand whether the pandemic had an impact on GPPS results for 2020. This aimed to establish whether overall trends were affected and looked at the effect on attitudes and experiences of local health services among those patients responding later in fieldwork compared with the same period in 2019.

Our analysis indicates that, due to the very small proportion of responses received in the last weeks of fieldwork, the results of the survey as a whole and the validity of comparisons between the 2020 survey and previous surveys have not been impacted. However, the analysis did show differences in patterns of responses during different time periods. These differences are particularly evident when looking at results received during the last two weeks of fieldwork (after lockdown was introduced).

8.2.1 Methodology

In relation to the COVID-19 timeline GPPS fieldwork can be split into three broad phases, pre-COVID-19, early stage and post-lockdown.

To assess whether COVID-19 influenced GPPS results overall and whether attitudes changed over the fieldwork period, findings for 2020 were compared with 2019 by these three phases. This was important because every year responses to the GPPS tend to be slightly different in the final period of fieldwork due to differences in the profile of patients who tend to take part later – more black and minority ethnic (BAME) patients, full-time workers, younger people and parents.

In order to select exact dates for these phases, NHS England and Ipsos MORI looked at a number of data sources, including NHS 111 data and public attitude data collected by Ipsos MORI.

Based on this data, and analysis of alternative dates, the following timetable was found to best reflect impact on the responses by COVID analysis.

- **Pre-COVID:** Jan 2 – Feb 23, **Early:** Feb 24 – March 22, **Lockdown:** March 23 - end of fieldwork

8.2.2 Response rate and response mode

Analysis found that there was a small impact on the response rate in the final period of fieldwork, when compared with the previous year.

Table 8.1: Proportion of responses by time in fieldwork, 2019 and 2020

	2019				2020			
	Jan 2 – Feb 23	Feb 24 – March 22	March 23 - end of fieldwork	Total	Jan 1 – Feb 23	Feb 24 – March 22	March 23 - end of fieldwork	Total
Number of responses	654,718	96,374	18,295	769,387	637,166	93,617	8,854	739,637
Proportion of total responses	85.1%	12.5%	2.4%	100.0%	86.1%	12.7%	1.2%	100.0%

As shown in Table 8.1, the response rate fell in the last two weeks of fieldwork and to a greater extent than in 2019. In 2019, 2.4% (18,295) of all responses were received in the final two weeks, while in 2020, post lockdown, this fell to 1.2% (8,854). While the response rate falls slightly each year, this represents a fall in equivalent numbers of patients responding of 51.6% in the final time period.

In contrast, the proportion responding in the second time period from Feb 24 – March 22 was very similar: 12.5% (96,374) in 2019 and 12.7% (93,617).

In terms of response mode, the proportion taking part online rose significantly in the last two weeks of fieldwork. While the proportion completing online increased overall this year, this increased further post-lockdown: 28.0% took part online in the last two weeks compared with 20.3% overall.

This is also in contrast to the usual pattern by mode, where the online proportion tends to fall over fieldwork. Equivalent figures for 2019 are 8.4% in the last two weeks compared with 10.2% taking part online overall.

The proportion responding by post fell significantly in the last two weeks. In 2020, around 10,000 fewer people responded by post during this time. This appears to have largely accounted for the lower overall level of response at the end of fieldwork, suggesting that fewer people were willing or able to return a postal questionnaire after lockdown.

Table 8.2: Mode of completion by time in fieldwork, 2019 and 2020

		2019							
		Jan 2 – Feb 23		Feb 24 – March 22		March 23 - end of fieldwork		Total	
Collection mode	Scanned	587,777	89.8%	86,190	89.4%	16,763	91.6%	690,730	89.8%
	Online	66,941	10.2%	10,184	10.6%	1,532	8.4%	78,657	10.2%
	Total	654,718	100.0%	96,374	100.0%	18,295	100.0%	769,387	100.0%
		2020							
		Jan 2 – Feb 23		Feb 24 – March 22		March 23 - end of fieldwork		Total	
Collection mode	Scanned	507,410	79.6%	75,576	80.7%	6,377	72.0%	589,363	79.7%
	Online	129,756	20.4%	18,041	19.3%	2,477	28.0%	150,274	20.3%
	Total	637,166	100.0%	93,617	100.0%	8,854	100.0%	739,637	100.0%

The decrease in postal responses was reflected across demographics but was especially pronounced among BAME respondents, who are generally more likely to take part on paper and later in fieldwork. In 2020, the proportion of postal responses from BAME respondents was 0.3 percentage points higher than in 2019 overall but in the last two weeks this fell by 5.2 percentage points. In contrast, the proportion of online responses from BAME respondents was 1.7 percentage points lower than 2019 post-lockdown but 2.7 percentage points lower overall.

8.2.3 Question responses

There were some small differences in how respondents answered questions post-lockdown than the comparable period in the previous year. However, as this was such a small percentage of responses (1.2%), this did not impact overall results.

For more details on this analysis, please contact GPPatientSurvey@ipsos.com.

8.3 Deliverables

The survey reporting specifications were created by Ipsos MORI in collaboration with NHS England. The specifications detail the content and layout of each of the Excel and PDF reports required, as well as the SPSS datasets.

All data and reports are encrypted and supplied to NHS England via a secure FTP (File Transfer Protocol) site.

Tables 8.3 to 8.6 describe the reports and datasets which are produced, including the presentation of statistics in each.

While GPPS data is available in weighted and unweighted formats, all official statistics and publications lead with the weighted data. Weighting ensures results are more representative of the population of adult patients registered with a GP practice. Weighted data is useful for

practices where fewer patients of a certain group (for example, younger patients) have taken part than expected.

The unweighted data is raw, unadjusted data. It identifies how many people from a specific subgroup or practice took part, but is less representative of how all patients at a practice might feel, and therefore also less useful for making accurate comparisons.

In the published reports, where fewer than 10 people have answered the question (unweighted or weighted), the data has been suppressed. This is to prevent individuals and their responses being identifiable in the data.

Table 8.3: Weighted reports (published via the www.gp-patient.com website)

	Detail / purpose
National report	National headline results presented in a PowerPoint report
National results and trends	National results and trends for all questions
National infographic	Selected national headline results in a visual format
CCG slide packs	135 PowerPoint reports containing results for a selection of key questions for individual CCGs (and variation by practice within CCG)
Patient experiences and compare tool (gp-patientsurvey.co.uk)	Results for a selection of key questions for individual practices (alongside CCG and national averages) Compare practices with other local practices Filter results by key subgroups (gender, age, ethnicity, long-term conditions)
Analysis tool (gp-patientsurvey.co.uk/analysistool)	Use the analysis tool to look at the survey results across years, and to analyse and compare results for specific groups of patients (e.g. by age, ethnicity and more)
National data (.csv)	One file in CSV (Comma-separated value) format that contains all the national-level data within the Excel based reports
CCG results (Excel)	One Excel report containing survey results for every CCG and the national results
CCG data (.csv)	One file in CSV format that contains all the CCG-level data within the Excel based reports

	Detail / purpose
Practice results (Excel)	One Excel report containing survey results for every practice and the national results
Practice data (.csv)	One file in CSV format that contains all the practice-level data within the Excel based reports

Table 8.4: Weighted and unweighted datasets provided to NHS England (not published)

	Detail / purpose
Person dataset	Person level dataset (SPSS) to allow for a range of further analyses
Practice dataset	Practice level dataset (SPSS) to allow for a range of further analyses
CCG dataset	CCG level dataset (SPSS) to allow for a range of further analyses
Dentistry person dataset	Person level dataset (SPSS) to allow for a range of further analyses based on dentistry questions

Table 8.5: Unweighted reports (published via the website)

	Detail / purpose
National data (.csv)	One file in CSV format that contains all the national-level data within the Excel based reports
CCG results (Excel)	One Excel report containing survey results for every CCG and the national results
CCG data (.csv)	One file in CSV format that contains all the CCG-level data within the Excel based reports
Practice results (Excel)	One Excel report containing survey results for every practice and the national results
Practice data (.csv)	One file in CSV format that contains all the practice-level data within the Excel based reports

Table 8.6: Annual reports (published via the website)

	Detail / purpose
Technical annex	Communicate operational details of survey

8.4 The GPPS 'Surveys and Reports' link

The Surveys and Reports page of the GPPS website allows users to access and download the published surveys and reports, CCG slide packs and infographics. Users select the date of publication and are presented with the materials relevant to that publication, organised at national, CCG and practice level. Users can access all published current and archived reports from 2007 onwards. The surveys and reports page is available at <http://www.gp-patient.co.uk/surveysandreports>.

Figure 8.2: Survey and reports link on the GPPS website

GP PATIENT SURVEY ABOUT CONTACT US RECEIVED A SURVEY? **NHS**

Surveys and Reports

Please use the tabs to select a time period

2020 2019 2018 2017 2010-16 2007-10

July 2020
Fieldwork: January - March 2020

You can compare results across years from 2018 onwards using our [analysis tool](#).

In 2018 the questionnaire was significantly redeveloped to reflect changes to primary care services in England as set out in the GP Forward View. In addition, for the first time the sample included 16-17 year olds to improve the inclusivity of the survey. These changes mean that the majority of questions are not comparable with results from previous publications, even where question wording remains similar.

For more information on these changes please refer to the [2018 technical report](#) and [questionnaire development report](#).

National ? **CCG** ? **GP Practice** ?

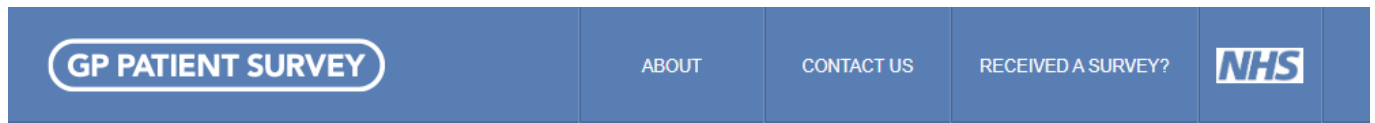
Select an item Select an item Select an item

Go Go Go

Download the 2020
National infographic
[here](#)

All current reports for national, CCG and practice level are accessible through this page (in weighted and unweighted data format), along with the other published reports as detailed in tables 8.3-8.6. Please note that prior to January 2016, reports are available for Regions and Area Teams; these are no longer provided following the integration of Area Teams into the four existing Regional Teams.

Under the CCG heading, there is a link to the [CCG slide packs page](#) for each relevant publication. This link takes users to an A-Z tool bar which allows easy access to each of the weighted PowerPoint reports for individual CCGs (see figure 8.3). These slide packs are available for the January 2015 publication onwards.

Figure 8.3: CCG slide packs page

CCG slide packs (2020)

Download your CCG slide pack for 2020 to view the results for key questions with comparative 2018 data, where available. In many cases these results exclude the non-specific response options (e.g. 'Don't know', 'Haven't tried', 'Can't say' / 'Doesn't Apply') to provide a more accurate reflection of how those using a service evaluate it. For more detail see the Presentation of Statistics document on the main [Surveys and Reports](#) page.

If you are having trouble opening the slide packs, or if you would like them in a different format, please contact gppatientsurvey@ipsos-mori.com. Some users are receiving an error message when downloading the slide packs; this is a result of different versions of PowerPoint but you should be able to open the file if you save it first.



A

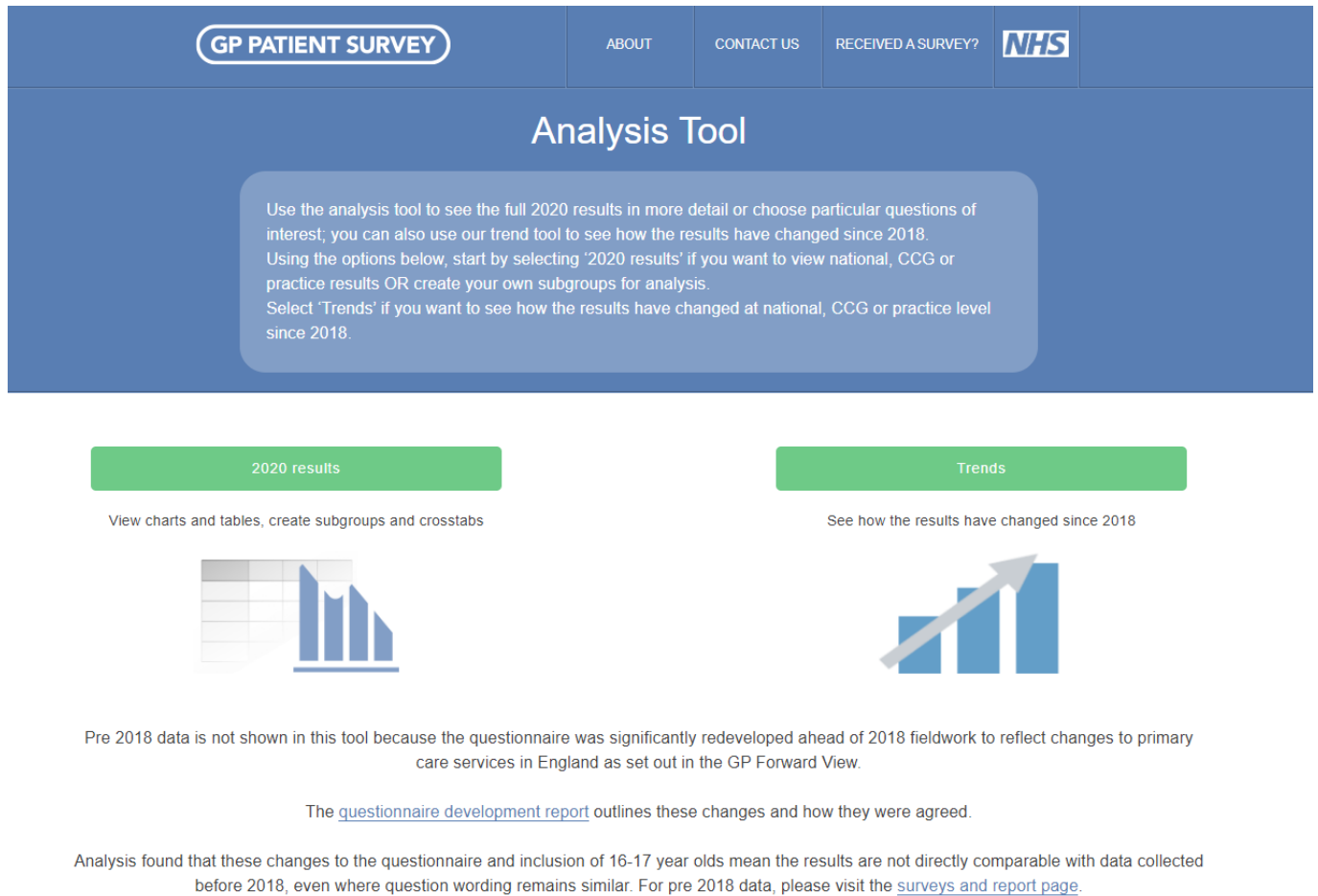
B

NHS BARKING AND DAGENHAM CCG
NHS BARNSLEY CCG
NHS BASILDON AND BRENTWOOD CCG
NHS BASSETLAW CCG
NHS BATH AND NORTH EAST SOMERSET, SWINDON AND WILTSHIRE CCG
NHS BEDFORDSHIRE CCG
NHS BERKSHIRE WEST CCG

8.5 The GPPS analysis tool

The GPPS Analysis Tool is designed to help users analyse GPPS data. It was redeveloped for publication in 2018, and a trend data function was added in 2019.

Figure 8.4: Website analysis tool home page




GP PATIENT SURVEY ABOUT CONTACT US RECEIVED A SURVEY? NHS

Analysis Tool

Use the analysis tool to see the full 2020 results in more detail or choose particular questions of interest; you can also use our trend tool to see how the results have changed since 2018. Using the options below, start by selecting '2020 results' if you want to view national, CCG or practice results OR create your own subgroups for analysis. Select 'Trends' if you want to see how the results have changed at national, CCG or practice level since 2018.

2020 results

View charts and tables, create subgroups and crosstabs



Trends

See how the results have changed since 2018



Pre 2018 data is not shown in this tool because the questionnaire was significantly redeveloped ahead of 2018 fieldwork to reflect changes to primary care services in England as set out in the GP Forward View.

The [questionnaire development report](#) outlines these changes and how they were agreed.

Analysis found that these changes to the questionnaire and inclusion of 16-17 year olds mean the results are not directly comparable with data collected before 2018, even where question wording remains similar. For pre 2018 data, please visit the [surveys and report page](#).

From the main Analysis Tool homepage users first select whether to look at 2020 results (current data) or trends:

8.5.2 2020 results

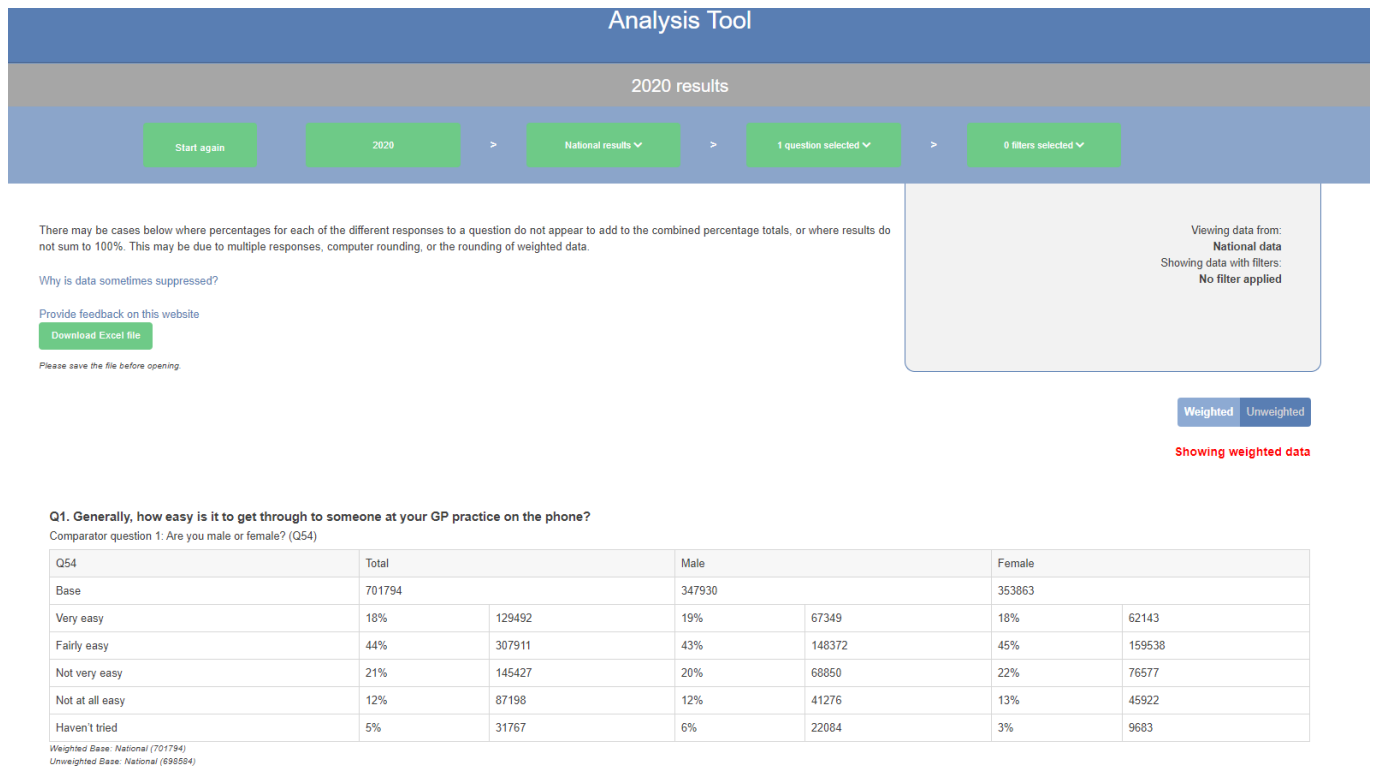
This section allows users to look at the data from the most recent publication.

Practice results: after selecting a practice, there are two options: charts and tables or comparison tables.

- View Results:** this section of the website allows the user to select a question or series of questions for a practice and view the results as a table or chart. These findings can be filtered based on patient sub-groups, for example, by gender, age or long-term condition. It is also possible to add up to two additional practice results, results for the relevant CCG, and national results for comparison. These charts are available to view weighted or unweighted and are available for download in Excel and PowerPoint formats.
- Create a crosstab:** this section of the website allows the user to create crosstabulations of the data, to look at the relationship between two questions in table format. For example, when the patient would have liked the appointment to be (Q15) analysed by level of concern about the health of the person the appointment was for (Q13). This can also be filtered based on patient sub-groups, for example, by gender, age or working status, and are available to view weighted or unweighted and available to download in Excel formats.

In 2019, a new function was added to the cross-tabulations to allow up to three comparator questions to be included in the analysis. This allows a user to quickly access comparison data for specific questions, as shown in the example below (overall experience of the GP practice (Q31) by all age groups within gender).

Figure 8.5: Analysis tool cross-tabulation function



CCG results: after selecting a CCG, there are two options: charts and tables or comparison tables. These work in the same way as the practice results, with the ability to add up to two additional CCGs and national results for comparison.

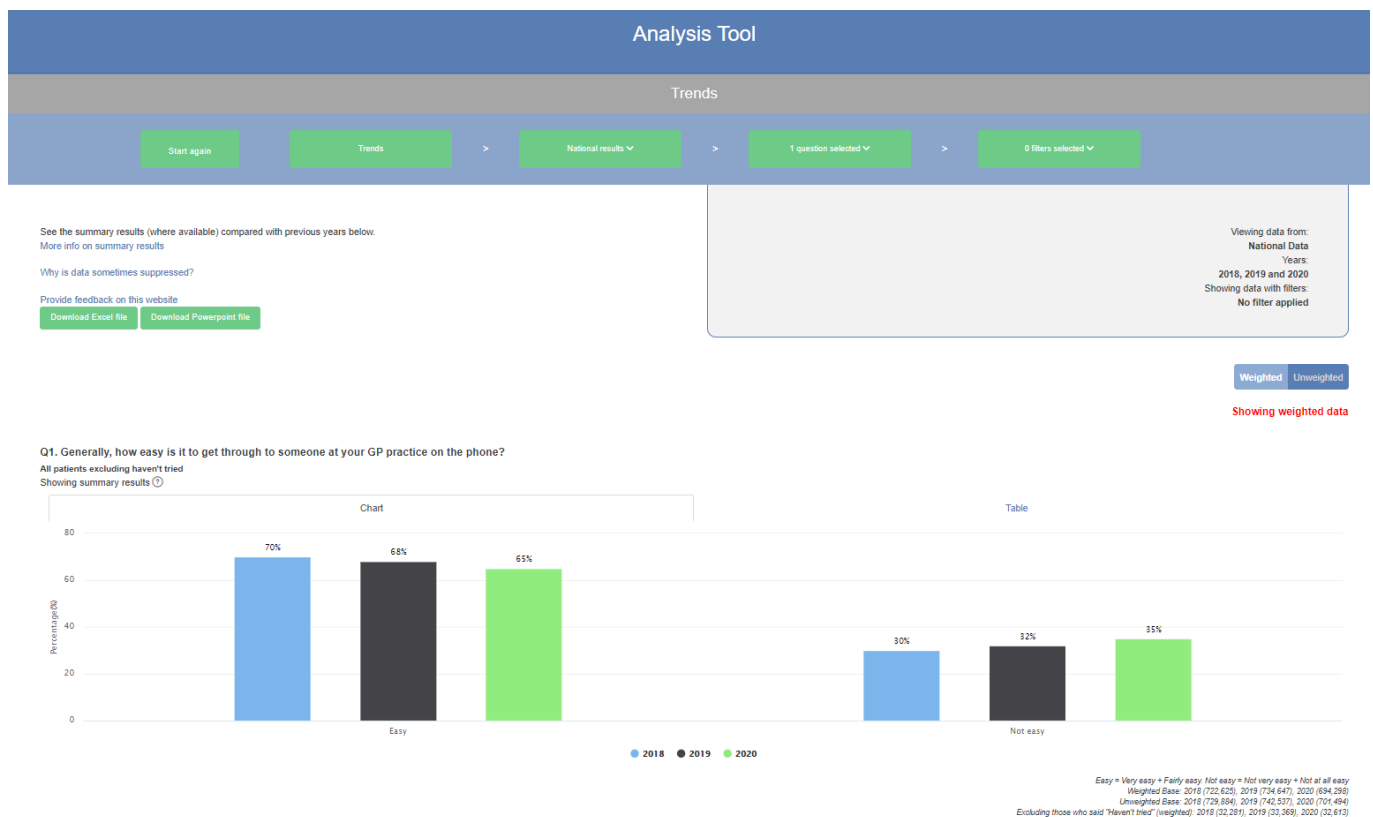
National results: this allows users to view the national results only, again as charts and tables or comparison tables.

Select subgroups: this option allows users to interrogate the data further by examining the responses collected from different respondent groups, for example, by men or women only. This presents national data by default, but results can also be filtered by a CCG or practice.

8.5.3 Trends

This section allows users to compare current data with previous years' data. Note that this option displays summary results (see section 8.1).

Figure 8.6: Website analysis tool – Trends 2018, 2019 and 2020



8.5.4 Practice comparison tool

Since June 2015, the main GPPS website also allows users to compare results across practices, CCGs and at the national level. This tool is available either through the practice search function on the home page or via the 'Search for a practice' and 'Compare a practice' links on the home page.

The practice comparison tool allows users to:

- view the results for a particular practice, and compare these results to the local CCG and national results;
- compare results to another local practice (within a 5-mile radius); and
- compare results to any other practice in the country.

Results are available for either weighted or unweighted data, with weighted data shown by default.

Appendix

9 Appendix

9.1 Questionnaire

+ Ipsos MORI

NHS +

GP PATIENT SURVEY

Please answer the questions below by putting an **X** in one box for each question unless more than one answer is allowed (these questions are clearly marked). We will keep your answers completely confidential.

If you would prefer to fill in the survey online, please go to www.gp-patient.co.uk.



Survey number:

1234567890



Online password:

ABCDE



YOUR LOCAL GP SERVICES

Q1 Generally, how easy is it to get through to someone at your GP practice on the phone?

- Very easy
- Fairly easy
- Not very easy
- Not at all easy
- Haven't tried

Q2 How helpful do you find the receptionists at your GP practice?

- Very helpful
- Fairly helpful
- Not very helpful
- Not at all helpful
- Don't know

Q3 In the past 12 months, have you booked general practice appointments in any of the following ways?

Please put an **X** in all the boxes that apply to you.

- In person
- By phone
- By automated telephone booking
- Online including on an app
- Via another route, such as NHS 111
- Doesn't apply / none of these

Q4 As far as you know, which of the following online services does your GP practice offer?

By 'online' we mean on a website or smartphone app.

Please put an **X** in all the boxes that apply to you.

- Booking appointments online
- Ordering repeat prescriptions online
- Accessing my medical records online
- None of these
- Don't know

Q5 Which of the following general practice online services have you used in the past 12 months?

By 'online' we mean on a website or smartphone app.

Please put an **X** in all the boxes that apply to you.

- Booking appointments online
- Ordering repeat prescriptions online
- Accessing my medical records online
- None of these

Q6 How easy is it to use your GP practice's website to look for information or access services?

- Very easy
- Fairly easy
- Not very easy
- Not at all easy
- Haven't tried

Q7 As far as you are aware, what general practice appointment times are available to you?

Please put an **X** in all the boxes that apply to you.

- Before 8am on at least one weekday
- Weekdays between 8am and 6.30pm
- After 6.30pm on a weekday
- On a Saturday
- On a Sunday
- Don't know

+

page 1

Please turn over

+

+

- Q8** How satisfied are you with the general practice appointment times that are available to you?
- Very satisfied
 - Fairly satisfied
 - Neither satisfied nor dissatisfied
 - Fairly dissatisfied
 - Very dissatisfied
 - I'm not sure when I can get an appointment

- Q9** Is there a particular GP you usually prefer to see or speak to?
- Yes, for all appointments
 - Yes, for some appointments but not others
 - NoGo to Q11
 - There is usually only one GP in my GP practiceGo to Q11

- Q10** How often do you see or speak to your preferred GP when you would like to?
- Always or almost always
 - A lot of the time
 - Some of the time
 - Never or almost never
 - I have not tried

MAKING AN APPOINTMENT

- Q11** When did you last try to make a general practice appointment, either for yourself or for someone else?
- Please include general practice appointments with different healthcare professionals. This could be with a GP, nurse or other healthcare professional.
- In the past 3 months
 - Between 3 and 6 months ago
 - Between 6 and 12 months ago
 - More than 12 months ago
 - Don't know
 - I haven't tried to make an appointment since being registered with my current GP practiceGo to Q23

If you tried to make more than one appointment, please think about just one of these when answering the next questions.

- Q12** Who was this appointment for?
- Me
 - A child under 16
 - An adult aged 16 or over who I am a carer for
 - Another adult aged 16 or over (including family members)

+

- Q13** How concerned were you at the time about your health, or the health of the person you were making this appointment for?
- Very concerned
 - Fairly concerned
 - Not very concerned
 - Not at all concerned
 - Can't remember

- Q14** Before you tried to get this appointment, did you do any of the following?
- Please put an X in all the boxes that apply to you.

- I looked for information online
- Spoke to a pharmacist
- Tried to treat myself / the person I was making this appointment for (for example with medication)
- Called an NHS helpline, such as NHS 111
- Went to or contacted another NHS service
- Asked for advice from a friend or family member
- Tried to get information or advice elsewhere (from a non-NHS service)
- I did not try to get information or advice

- Q15** When would you have liked this appointment to be?

- Please choose one option only.
- On the same day
 - On the next day
 - A few days later
 - A week or more later
 - I didn't have a specific day in mind
 - Can't remember

- Q16** On this occasion, were you offered a choice of appointment?

- This could be a choice of place, time or healthcare professional.
- Please put an X in all the boxes that apply to you.
- Yes, a choice of place
 - Yes, a choice of time or day
 - Yes, a choice of healthcare professional
 - No, I was not offered a choice of appointment
 - Can't remember
 - Doesn't apply

+



Q17 Were you satisfied with the type of appointment (or appointments) you were offered?

- Yes, and I accepted an appointment
- No, but I still took an appointment
- No, and I did not take an appointment

PLEASE GO TO Q20

Q18 If you did not take any appointments you were offered, why was that?

Please put an X in all the boxes that apply to you.

- There weren't any appointments available for the time or day I wanted
- The appointment was at too short notice
- The appointment wasn't soon enough
- I couldn't book ahead at my GP practice
- There weren't any appointments at the place I wanted
- The appointment was too far away / too difficult to get to
- I couldn't see my preferred GP
- There weren't any appointments with the healthcare professional I wanted
- The type of appointment I wanted was not available
- Another reason

Q19 What did you do when you did not take the appointment you were offered?

Please put an X in all the boxes that apply to you.

- Got an appointment for a different day.....Go to Q20
- Called an NHS helpline, such as NHS 111
- Went to A&E
- Spoke to a pharmacist
- Went to or contacted another NHS service
- Decided to contact my practice another time
- Looked for information online
- Spoke to a friend or family member
- Didn't see or speak to anyone

PLEASE GO TO Q22



Q20 What type of appointment did you get?

I got an appointment...

- ...to speak to someone on the phone
- ...to see someone at my GP practice
- ...to see someone at another general practice location
- ...to speak to someone online, for example on a video call
- ...for a home visit

Q21 How long after initially trying to book the appointment did the appointment take place?

- On the same day
- On the next day
- A few days later
- A week or more later
- Can't remember

Q22 Overall, how would you describe your experience of making an appointment?

- Very good
- Fairly good
- Neither good nor poor
- Fairly poor
- Very poor

YOUR LAST APPOINTMENT

The next few questions are about the last time you personally had a general practice appointment.

Q23 When was your last general practice appointment?

Please include appointments with different healthcare professionals, at different locations, as well as telephone and online appointments.

- In the past 3 months
- Between 3 and 6 months ago
- Between 6 and 12 months ago
- More than 12 months ago
- I haven't had an appointment since being registered with my current GP practice.....Go to Q31

PLEASE GO TO Q24





Q24 Who was your last general practice appointment with?

Please choose one option only.

- A GP
- A nurse
- A general practice pharmacist
- A mental health professional
- Another healthcare professional
- Don't know / not sure who I saw

Q25 How long after your appointment time did you wait to see or speak to the healthcare professional?

- 5 minutes or less
- Between 5 and 15 minutes
- 15 to 30 minutes
- More than 30 minutes
- I didn't have an appointment at a set time
- Can't remember

Q26 Last time you had a general practice appointment, how good was the healthcare professional at each of the following?

Giving you enough time

- Very good
- Good
- Neither good nor poor
- Poor
- Very poor
- Doesn't apply

Listening to you

- Very good
- Good
- Neither good nor poor
- Poor
- Very poor
- Doesn't apply

Treating you with care and concern

- Very good
- Good
- Neither good nor poor
- Poor
- Very poor
- Doesn't apply



Q27 During your last general practice appointment, did you feel that the healthcare professional recognised and/or understood any mental health needs that you might have had?

- Yes, definitely
- Yes, to some extent
- No, not at all
- I did not have any mental health needs
- Did not apply to my last appointment

Q28 During your last general practice appointment, were you involved as much as you wanted to be in decisions about your care and treatment?

- Yes, definitely
- Yes, to some extent
- No, not at all
- Don't know / doesn't apply

Q29 During your last general practice appointment, did you have confidence and trust in the healthcare professional you saw or spoke to?

- Yes, definitely
- Yes, to some extent
- No, not at all
- Don't know / can't say

Q30 Thinking about the reason for your last general practice appointment, were your needs met?

- Yes, definitely
- Yes, to some extent
- No, not at all
- Don't know / can't say

OVERALL EXPERIENCE

Q31 Overall, how would you describe your experience of your GP practice?

- Very good
- Fairly good
- Neither good nor poor
- Fairly poor
- Very poor

YOUR HEALTH

Q32 Have you experienced any of the following over the last 12 months?

Please put an X in all the boxes that apply to you.

- Problems with your physical mobility, for example, difficulty getting about your home
- Two or more falls that have needed medical attention
- Feeling isolated from others
- None of these





Q33 Do you take 5 or more medications on a regular basis?
 Please think about prescribed medications as well as those bought over the counter.
 Yes
 No

Q34 Do you have any long-term physical or mental health conditions, disabilities or illnesses?
 By long-term, we mean anything lasting or expected to last for 12 months or more. Please include issues related to old age.

- Yes
- No
- Don't know / can't say
- I would prefer not to sayGo to Q44

Q35 Which, if any, of the following long-term conditions do you have?
 Please put an X in all the boxes that apply to you.

- Alzheimer's disease or other cause of dementia
- Arthritis or ongoing problem with back or joints
- Blindness or partial sight
- A breathing condition such as asthma or COPD
- Cancer (diagnosis or treatment in the last 5 years)
- Deafness or hearing loss
- A developmental disability, such as autism or ADHD
- Diabetes
- A heart condition, such as angina or atrial fibrillation
- High blood pressure
- Kidney or liver disease
- A learning disability
- A mental health condition
- A neurological condition, such as epilepsy
- A stroke (which affects your day-to-day life)
- Another long-term condition or disability
- I do not have any long-term conditions.....Go to Q44

PLEASE GO TO Q36



Q36 Do any of these conditions reduce your ability to carry out your day-to-day activities?
 Yes, a lot
 Yes, a little
 No, not at all

Q37 How confident are you that you can manage any issues arising from your condition (or conditions)?
 Very confident
 Fairly confident
 Not very confident
 Not at all confident
 Don't know

Q38 In the last 12 months, have you had enough support from local services or organisations to help you to manage your condition (or conditions)?
 Please think about all services and organisations, not just health services.
 Yes, definitely
 Yes, to some extent
 No
 I haven't needed support
 Don't know / can't say

Q39 In the last 12 months have you had any unexpected stays in hospital because of your condition (or conditions)?
 Yes
 No





The next few questions are about support you have had to plan and manage care relating to your long-term condition (or conditions).

Q40 Have you had a conversation with a healthcare professional from your GP practice to discuss what is important to you when managing your condition (or conditions)?

- Yes
- No.....Go to Q44
- Don't know.....Go to Q44

A care plan is an agreement between you and healthcare professionals to help you manage your health day-to-day. It can include information about your medicine, an eating or exercise plan, or goals you want to achieve such as returning to work.

Q41 Have you agreed a plan with a healthcare professional from your GP practice to manage your condition (or conditions)?

- Yes
- No.....Go to Q44
- Don't know.....Go to Q44

Q42 How helpful have you found this plan in managing your condition (or conditions)?

- Very helpful
- Fairly helpful
- Not very helpful
- Not at all helpful
- Don't know

Q43 Have you been given (or offered) a written or printed copy of this plan?

- Yes
- No
- Don't know



WHEN YOUR GP PRACTICE IS CLOSED

Q44 In the past 12 months, have you contacted an NHS service when you wanted to see a GP but your GP practice was closed?

- Yes, for myself
- Yes, for someone else
- NoGo to Q49

Please think about the last time you contacted an NHS service (for yourself or for someone else) when you wanted to see a GP but your GP practice was closed.

Q45 Considering all of the services you contacted, which of the following happened on that occasion?

Please put an X in all the boxes that apply to you.

- I contacted an NHS service by telephone
- A healthcare professional called me back
- A healthcare professional visited me at home
- I went to A&E
- I saw a pharmacist
- I went to another general practice service
- I went to another NHS service
- Can't remember

Q46 How do you feel about how quickly you received care or advice on that occasion?

- It was about right
- It took too long
- Don't know / doesn't apply

Q47 Considering all of the people that you saw or spoke to on that occasion, did you have confidence and trust in them?

- Yes, definitely
- Yes, to some extent
- No, not at all
- Don't know / can't say

Q48 Overall, how would you describe your last experience of NHS services when you wanted to see a GP but your GP practice was closed?

- Very good
- Fairly good
- Neither good nor poor
- Fairly poor
- Very poor
- Don't know / can't say

NHS DENTISTRY

- Q49** When did you last try to get an NHS dental appointment for yourself?
- In the last 3 months
 - Between 3 and 6 months ago
 - Between 6 months and a year ago
 - Between 1 and 2 years ago
 - More than 2 years agoGo to Q53
 - I have never tried to get an NHS dental appointmentGo to Q53

- Q50** Last time you tried to get an NHS dental appointment, was it with a dental practice you had been to before for NHS dental care?
- Yes
 - No
 - Can't remember

- Q51** Were you successful in getting an NHS dental appointment?
- Yes
 - No
 - Can't remember

- Q52** Overall, how would you describe your experience of NHS dental services?
- Very good
 - Fairly good
 - Neither good nor poor
 - Fairly poor
 - Very poor

PLEASE GO TO Q54

- Q53** Why haven't you tried to get an NHS dental appointment in the last two years? If more than one of these applies to you, please put an X in the box next to the main one only.
- I haven't needed to visit a dentist
 - I no longer have any natural teeth
 - I haven't had time to visit a dentist
 - I don't like going to the dentist
 - I didn't think I could get an NHS dentist
 - I'm on a waiting list for an NHS dentist
 - I stayed with my dentist when they changed from NHS to private
 - I prefer to go to a private dentist
 - NHS dental care is too expensive
 - Another reason

SOME QUESTIONS ABOUT YOU

The following questions will help us to see how experiences vary between different groups of the population. We will keep your answers completely confidential.

- Q54** Are you male or female?
- Male
 - Female

- Q55** How old are you?
- | | |
|-----------------------------------|-------------------------------------|
| <input type="checkbox"/> Under 16 | <input type="checkbox"/> 45 to 54 |
| <input type="checkbox"/> 16 to 17 | <input type="checkbox"/> 55 to 64 |
| <input type="checkbox"/> 18 to 24 | <input type="checkbox"/> 65 to 74 |
| <input type="checkbox"/> 25 to 34 | <input type="checkbox"/> 75 to 84 |
| <input type="checkbox"/> 35 to 44 | <input type="checkbox"/> 85 or over |

- Q56** What is your ethnic group?
- A. White**
- English / Welsh / Scottish / Northern Irish / British
 - Irish
 - Gypsy or Irish Traveller
 - Any other White background
- B. Mixed / multiple ethnic groups**
- White and Black Caribbean
 - White and Black African
 - White and Asian
 - Any other Mixed / multiple ethnic background
- C. Asian / Asian British**
- Indian
 - Pakistani
 - Bangladeshi
 - Chinese
 - Any other Asian background
- D. Black / African / Caribbean / Black British**
- African
 - Caribbean
 - Any other Black / African / Caribbean background
- E. Other ethnic group**
- Arab
 - Any other ethnic group



Q57 Which of these best describes what you are doing at present?
 If more than one of these applies to you, please put an X in the box next to the main one only.

- Full-time paid work (30 hours or more each week)
- Part-time paid work (under 30 hours each week)
- Full-time education at school, college or university
- Unemployed
- Permanently sick or disabled
- Fully retired from work
- Looking after the family or home
- Doing something else

Q58 Are you a parent or a legal guardian for any children aged under 16 living in your home?

- Yes
- No

Q59 Do you look after, or give any help or support to family members, friends, neighbours or others because of either:

- long-term physical or mental ill health / disability, or
- problems related to old age?

Don't count anything you do as part of your paid employment.

- No
- Yes, 1 to 9 hours a week
- Yes, 10 to 19 hours a week
- Yes, 20 to 34 hours a week
- Yes, 35 to 49 hours a week
- Yes, 50 or more hours a week

Q60 Are you a deaf person who uses sign language?

- Yes
- No

Q61 Which of the following best describes your smoking habits?

- Never smoked
- Former smoker
- Occasional smoker
- Regular smoker

Q62 Which of the following best describes how you think of yourself?

- Heterosexual or straight
- Gay or lesbian
- Bisexual
- Other
- I would prefer not to say

Q63 Which, if any, of the following best describes your religion?

- No religion
- Buddhist
- Christian (including Church of England, Catholic, Protestant, and other Christian denominations)
- Hindu
- Jewish
- Muslim
- Sikh
- Other
- I would prefer not to say

Thank you for your time.
 Please return this questionnaire in the reply paid envelope provided or send it in an envelope marked **FREEPOST GP PATIENT SURVEY** (you do not need a stamp).

Originally developed with  



9.2 Initial letter



Survey number:
Online password:

2 January 2020

Dear

Your chance to help the NHS

I am writing to ask you to take part in the GP Patient Survey. This survey is being carried out by Ipsos MORI on behalf of NHS England. Nearly 1 million people a year help us by taking part in the survey.

Improving GP and health services in your area

The survey asks about your experiences of your GP practice and other local NHS services, and includes questions about you and your general health. The answers we get help the NHS to improve local health services for people like you and your family. Even if you haven't visited your GP practice recently, or you have filled in a questionnaire before, it's still really important that we hear from you.

Please take part by filling in the enclosed questionnaire or going online. Taking part online is cheaper for the NHS.

Fill in the questionnaire and send it back in the enclosed envelope. It's free - you don't need a stamp. Or take part online. Go to www.gpsurvey.net/login and use the login details below:

Survey number: 1234567890 Online password: AAAAA

It should take less than 15 minutes.

You can help us at NHS England by filling in the survey as soon as possible. That way we won't need to send you any reminders.

Your information will be kept confidential

There is more information about the survey and confidentiality over the page. If you have any questions or need help filling in the questionnaire, go to the main website at www.gp-patient.co.uk. Or you can call Ipsos MORI on Freephone 0800 819 9135 (8am to 9pm Monday to Friday, 10am to 5pm on Saturdays).

Thank you very much for giving some of your time to help the NHS.

Yours sincerely

Neil Churchill
Director of Patient Experience
NHS England

Please turn over

Why are you carrying out this survey?

This survey will help the NHS to improve GP practices and other local NHS services so they better meet your needs. You can see all the results from previous surveys, including the results for your local GP practices, by visiting the website at www.gp-patient.co.uk.

How did you get my name and address?

Your name was chosen at random from the NHS list of patients registered with a GP. Under the General Data Protection Regulation and Data Protection Act 2018, we at NHS England are responsible, as a 'data controller', for the information we hold about you. Ipsos MORI is the 'data processor' acting on our behalf to carry out the survey.

Ipsos MORI will keep your contact details confidential and only use them to send you this survey. Ipsos MORI has not been given any information about your health. Once the survey is over, Ipsos MORI will destroy your contact details.

The NHS England privacy notice explains how you can get in touch and your rights about how your information is used. You can see the notice at www.england.nhs.uk/contact-us/privacy-notice.

What happens to my answers?

Your answers are put together with the answers from other people to provide results for your GP practice and local area, and to produce national results. They are not linked to your name, address or NHS number. Your answers will be kept confidential by Ipsos MORI, and by approved NHS England staff and researchers.

Nobody will be able to identify you in any results that are published. For more information go to www.gp-patient.co.uk/confidentiality.

What is the survey number on the front of this letter used for?

Ipsos MORI use the survey number to identify who has responded to the survey (they only send reminders to people who haven't responded) and to link responses to GP practices. The survey number is not linked to your NHS number.

Taking part in the survey is voluntary. If you do not want to receive any reminders, please send us the blank questionnaire in the envelope provided or call Ipsos MORI on Freephone 0800 819 9135.

Can someone help me fill in the questionnaire?

Yes, that's fine. You can contact our team or ask a friend or relative to help, but please make sure the answers are only about your experiences.

العربية gp-patient.co.uk/arabic 0800 819 9136	简体中文 gp-patient.co.uk/chinese 0800 819 9141	Soomaali gp-patient.co.uk/somali 0800 819 9146
বাংলা gp-patient.co.uk/bengali 0800 819 9137	Polski gp-patient.co.uk/polish 0800 819 9142	Español gp-patient.co.uk/spanish 0800 819 9147
Čeština gp-patient.co.uk/czech 0800 819 9138	Português gp-patient.co.uk/portuguese 0800 819 9143	Türkçe gp-patient.co.uk/turkish 0800 819 9148
Français gp-patient.co.uk/french 0800 819 9139	ਪੰਜਾਬੀ gp-patient.co.uk/punjabi 0800 819 9144	اردو gp-patient.co.uk/urdu 0800 819 9149
ગુજરાતી gp-patient.co.uk/gujarati 0800 819 9140	slovenčina gp-patient.co.uk/slovak 0800 819 9145	



gp-patient.co.uk/bcl

If you want a copy of the questionnaire in large print or Braille, call Freephone 0800 819 9135.

9.3 Reminder postcard

Last week Ipsos MORI sent you a questionnaire because you were chosen at random to take part in a survey and share your experiences of GP services and other local NHS services.

Your information will help NHS England improve services in your area.

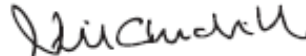
9 January 2020

If you have already filled in and returned the questionnaire, thank you very much. If not, please could you do so as soon as possible. If you prefer, you can fill in the survey online at www.gpsurvey.net/login, using the login details sent with the questionnaire last week.

You were chosen at random to take part in the survey because you are registered with a GP practice in England. Even if you haven't visited your GP practice recently, your answers are still really important to us.

If you have any questions, please call Ipsos MORI on Freephone **0800 819 9135** (8am to 9pm Monday to Friday, 10am to 5pm on Saturdays). Or you can visit the main website at www.gp-patient.co.uk.

Thank you



Neil Churchill
Director of Patient Experience
NHS England

GP PATIENT SURVEY

Survey number: **1234567890**

9.4 First reminder letter

GP PATIENT SURVEY



Survey number:
Online password:

3 February 2020

Dear

Taking part will help you, your family and your community

In early January I sent you a letter asking you to take part in a survey to help improve local NHS services. If you have already filled in the questionnaire online or returned it in the post, thank you for your time - you do not need to do anything else.

We need to hear from as many people as possible, including you

If you have not filled in the enclosed questionnaire or gone online, please do so to give us your views on local NHS services. Taking part online is cheaper for the NHS.

Even if you haven't visited your GP practice recently, your answers are still really important to us. It is only by hearing from as many people as possible that we can be sure that our results represent the views of everyone in your area.

Please fill in the questionnaire and send it back in the enclosed Freepost envelope. It's free - you don't need a stamp. Or take part online. Go to www.gpsurvey.net/login and use the login details below:

Survey number: 1234567890 Online password: AAAAA

Your answers will be kept confidential

There is more information about the survey and confidentiality over the page. If you have any questions or need help filling in the questionnaire, go to the main website at www.gp-patient.co.uk. Or you can call Ipsos MORI on Freephone 0800 819 9135 (8am to 9pm Monday to Friday, 10am to 5pm on Saturdays).

Thank you very much for giving some of your time to help local NHS services.

Yours sincerely

Neil Churchill
Director of Patient Experience
NHS England

Please turn over

Why are you carrying out this survey?

This survey will help the NHS to improve GP practices and other local NHS services so they better meet your needs. You can see all the results from previous surveys, including the results for your local GP practices, by visiting the website at www.gp-patient.co.uk.

How did you get my name and address?

Your name was chosen at random from the NHS list of patients registered with a GP. Under the General Data Protection Regulation and Data Protection Act 2018, we at NHS England are responsible, as a 'data controller', for the information we hold about you. Ipsos MORI is the 'data processor' acting on our behalf to carry out the survey.

Ipsos MORI will keep your contact details confidential and only use them to send you this survey. Ipsos MORI has not been given any information about your health. Once the survey is over, Ipsos MORI will destroy your contact details.

The NHS England privacy notice explains how you can get in touch and your rights about how your information is used. You can see the notice at www.england.nhs.uk/contact-us/privacy-notice.

What happens to my answers?

Your answers are put together with the answers from other people to provide results for your GP practice and local area, and to produce national results. They are not linked to your name, address or NHS number. Your answers will be kept confidential by Ipsos MORI, and by approved NHS England staff and researchers.

Nobody will be able to identify you in any results that are published. For more information go to www.gp-patient.co.uk/confidentiality.

What is the survey number on the front of this letter used for?

Ipsos MORI use the survey number to identify who has responded to the survey (they only send reminders to people who haven't responded) and to link responses to GP practices. The survey number is not linked to your NHS number.

Taking part in the survey is voluntary. If you do not want to receive any reminders, please send us the blank questionnaire in the envelope provided or call Ipsos MORI on Freephone 0800 819 9135.

Can someone help me fill in the questionnaire?

Yes, that's fine. You can contact our team or ask a friend or relative to help, but please make sure the answers are only about your experiences.

العربية gp-patient.co.uk/arabic 0800 819 9136	简体中文 gp-patient.co.uk/chinese 0800 819 9141	Soomaali gp-patient.co.uk/somali 0800 819 9146
বাংলা gp-patient.co.uk/bengali 0800 819 9137	Polski gp-patient.co.uk/polish 0800 819 9142	Español gp-patient.co.uk/spanish 0800 819 9147
Čeština gp-patient.co.uk/czech 0800 819 9138	Português gp-patient.co.uk/portuguese 0800 819 9143	Türkçe gp-patient.co.uk/turkish 0800 819 9148
Français gp-patient.co.uk/french 0800 819 9139	ਪੰਜਾਬੀ gp-patient.co.uk/punjabi 0800 819 9144	اردو gp-patient.co.uk/urdu 0800 819 9149
ગુજરાતી gp-patient.co.uk/gujarati 0800 819 9140	slovenčina gp-patient.co.uk/slovak 0800 819 9145	



gp-patient.co.uk/bsl

If you want a copy of the questionnaire in large print or Braille, call Freephone 0800 819 9135.

9.5 Second reminder letter



Survey number:
Online password:

2 March 2020

Dear

In January and February I asked you to give us your feedback to help improve local NHS services. If you have already filled in the survey, thank you for your time - you do not need to do anything else.

Your last chance to help shape the health services in your area

If you have not already filled in the questionnaire, please do so to give us your views. This will help to make sure the NHS delivers the healthcare services that you and your family need.

Return the completed questionnaire by 31 March

Please take part by filling in the enclosed questionnaire or going online by 31 March. Taking part online is cheaper for the NHS.

Fill in the questionnaire and send it back in the enclosed Freepost envelope. It's free - you don't need a stamp. Or take part online. Go to www.gpsurvey.net/login and use the login details below:

Survey number: 1234567890 Online password: AAAAA

It should take less than 15 minutes.

Your answers will be kept confidential

There is more information about the survey and confidentiality over the page. If you have any questions or need help filling in the questionnaire, go to the main website at www.gp-patient.co.uk. Or you can call Ipsos MORI on Freephone 0800 819 9135 (8am to 9pm Monday to Friday, 10am to 5pm on Saturdays).

Thank you very much for giving some of your time to help local NHS services.

Yours sincerely

Neil Churchill
Director of Patient Experience
NHS England

Please turn over

Why are you carrying out this survey?

This survey will help the NHS to improve GP practices and other local NHS services so they better meet your needs. You can see all the results from previous surveys, including the results for your local GP practices, by visiting the website at www.gp-patient.co.uk.

How did you get my name and address?

Your name was chosen at random from the NHS list of patients registered with a GP. Under the General Data Protection Regulation and Data Protection Act 2018, we at NHS England are responsible, as a 'data controller', for the information we hold about you. Ipsos MORI is the 'data processor' acting on our behalf to carry out the survey.

Ipsos MORI will keep your contact details confidential and only use them to send you this survey. Ipsos MORI has not been given any information about your health. Once the survey is over, Ipsos MORI will destroy your contact details.

The NHS England privacy notice explains how you can get in touch and your rights about how your information is used. You can see the notice at www.england.nhs.uk/contact-us/privacy-notice.

What happens to my answers?

Your answers are put together with the answers from other people to provide results for your GP practice and local area, and to produce national results. They are not linked to your name, address or NHS number. Your answers will be kept confidential by Ipsos MORI, and by approved NHS England staff and researchers.

Nobody will be able to identify you in any results that are published. For more information go to www.gp-patient.co.uk/confidentiality.

What is the survey number on the front of this letter used for?

Ipsos MORI use the survey number to identify who has responded to the survey (they only send reminders to people who haven't responded) and to link responses to GP practices. The survey number is not linked to your NHS number.

Taking part in the survey is voluntary. If you do not want to receive any reminders, please send us the blank questionnaire in the envelope provided or call Ipsos MORI on Freephone 0800 819 9135.

Can someone help me fill in the questionnaire?

Yes, that's fine. You can contact our team or ask a friend or relative to help, but please make sure the answers are only about your experiences.

العربية gp-patient.co.uk/arabic 0800 819 9136	简体中文 gp-patient.co.uk/chinese 0800 819 9141	Soomaali gp-patient.co.uk/somali 0800 819 9146
বাংলা gp-patient.co.uk/bengali 0800 819 9137	Polski gp-patient.co.uk/polish 0800 819 9142	Español gp-patient.co.uk/spanish 0800 819 9147
Čeština gp-patient.co.uk/czech 0800 819 9138	Português gp-patient.co.uk/portuguese 0800 819 9143	Türkçe gp-patient.co.uk/turkish 0800 819 9148
Français gp-patient.co.uk/french 0800 819 9139	ਪੰਜਾਬੀ gp-patient.co.uk/punjabi 0800 819 9144	اردو gp-patient.co.uk/urdu 0800 819 9149
ગુજરાતી gp-patient.co.uk/gujarati 0800 819 9140	slovenčina gp-patient.co.uk/slovak 0800 819 9145	



If you want a copy of the questionnaire in large print or Braille, call Freephone 0800 819 9135.

9.6 Piloting a new sample frame

From 2021 the Personal Demographics Service (PDS) will provide the sample frame for GPPS because the National Health Applications and Infrastructure Service (NHAIS) database is being decommissioned. Ahead of this change, to test for any differences between the two sample sources and achieved survey responses, during 2020 fieldwork a pilot was run on the PDS mirroring the main NHAIS approach.

9.7 Experiments

As the PDS provides access to email addresses and mobile numbers for the first time, a set of experiments ran alongside the PDS “control” on a sub-sample of those selected for the survey. These experiments were designed to encourage more participants to take part online, to reduce overall printing and postage costs for the survey. The experiments focused on multi-mode contact with patients by letter, email and text message, and included push-to-web sequential mailing contact strategies where initial letter contact(s) withheld the paper questionnaire (only providing log-in details for the online survey).

The experiment groups are summarised below:

- **Replacing the postcard with an alternative contact strategy (Treatments A and B):**
These experiments involved replacing the postcard with either an SMS or an email-priority email/SMS strategy. Otherwise the mailing strategy remained consistent with the main survey. The postcard acts as an effective nudge to participate and these treatments aimed to understand whether this nudge could be achieved using SMS or email instead, which is a cheaper method of contact. Since it is also possible to include a unique personalised link to the survey within the emails and SMS, which cannot be done using a postcard, it also aimed to understand whether this makes online participation easier.
- **Moving to a sequential push-to-web mailing strategy (Treatments C, D, E and F):**
These experiment groups moved from offering both the paper and online versions of the survey at the same time (simultaneous push-to-web) to offering a link to the online survey only first, followed by paper versions in later mailings (sequential push-to-web). This was combined with using mobile numbers as part of an additional contact strategy. Sequential push-to-web is associated with higher online survey take-up, but lower overall response rates. Various designs of push-to-web were tested across groups C, D, E and F, including variations on the number of contacts before a postal questionnaire was introduced, the length of time between mailings and the number of mobile contacts between physical mailings.

- **Including an additional SMS reminder:** For all treatments, the sample was split to trial the effect of an additional SMS reminder after the first reminder/second letter mailing on the response rate. This approach was tested across all treatments to allow comparison of impact, as the additional SMS reminder may have a different level of impact depending on the intervention it is associated with. In addition, to understand the impact of two consecutive SMS reminders, treatment group F tested using two SMS reminders in a row after the initial invitation letter, in weeks two and three.

The experiments were embedded within the main GPPS survey, meaning fieldwork was carried out at the same time and using a subset of the sample.

9.7.1 Allocation of sample to treatment groups

Of the c.92,000 patients selected via the PDS, c.20,000 cases were systematically selected to take part in the PDS pilot and c.72,000 were allocated across the six experiment groups. The sample was stratified by CCG and by practice, with a '1 in n' random selection. These sample sizes provided sufficient power to allow comparison of the PDS pilot with NHAIS and each experiment group with the PDS pilot/control.

Selected patients were de-duplicated against the main sample to ensure they were not included twice, with preference given to patients in the main NHAIS sample.

9.7.2 Results

Table 9.1 details the PDS pilot and six different treatment groups and the response rate for each.

Table 9.1: Details and response rates of the PDS pilot sample and each experimental treatment group

	Summary	Invited	Returned	Response rate	Percent of returned completed online
PDS	Same as the main survey methodology using PDS as the sampling frame (control)	20,116	6,400	31.8%	19.1%
A	SMS Replace postcard with SMS (where available)	11,960	3,712	31.0%	28.2%
B	Email/SMS Replace postcard with email (where available) and then SMS (where available)	11,962	3,559	29.8%	28.6%
C	Push-to-web (gentler) Remove questionnaire from first mailing, replace postcard with SMS reminder (where available)	11,961	3,374	28.2%	57.0%
D	Push-to-web (harder) Remove questionnaire from first two mailings, replace postcard with SMS reminder (where available)	11,962	3,002	25.1%	72.5%
E	Push-to-web (harder) with shorter mailing intervals Remove questionnaire from first two mailings, replace postcard with SMS reminder (where available) and move timings closer together	11,970	3,288	27.5%	71.8%
F	Push-to-web (harder) with additional SMS contact Remove questionnaire from first two mailings, replace postcard with SMS reminder (where available) and include second SMS reminder in week 3	11,966	3,189	26.7%	75.9%

Analysis has been carried out to look at the differences in results between the experimental treatment groups and the main survey across a range of key survey estimates and demographic profiles. This analysis found no discernible or meaningful pattern in differences when responses to the experimental groups were included within the main survey results. Therefore, responses to the experimental groups have been included in published results for 2020: they equate to 3.6% of the total number of completed surveys.

Further analysis is being carried out looking at the difference in response rate and proportion of online completes for each experimental treatment group, and the cost effectiveness of these interventions.

For more information

3 Thomas More Square
London
E1W 1YW

t: +44 (0)20 3059 5000

www.ipsos-mori.com
<http://twitter.com/ipsosMORI>

About Ipsos MORI's Social Research Institute

The Social Research Institute works closely with national governments, local public services and the not-for-profit sector. Its c.200 research staff focus on public service and policy issues. Each has expertise in a particular part of the public sector, ensuring we have a detailed understanding of specific sectors and policy challenges. This, combined with our methods and communications expertise, helps ensure that our research makes a difference for decision makers and communities.